

## Temperature/Relative Humidity Data Logger with Display Part of the NOMAD Family

### OM-DVTH



- ✓ **Text Display:** Shows Real Time Temperature, Humidity and Dew Point; Also Shows Logging Summary, Sample Rate, Memory Used and Memory Left
- ✓ **Graph Display:** Shows Measurement Trends Graphically, with Scrolling Feature
- ✓ **Visual Over and Under Alarm Indicators** for Temperature and Humidity
- ✓ **USB Connection**
- ✓ **Compatible with Windows® XP/VISTA/7**
- ✓ **Calibration Through Software**
- ✓ **Ideal for Refrigerators, Freezers, Museums, Computer Rooms, Labs**



OM-DVTH shown larger than actual size.

The OM-DVTH temperature/relative humidity data logger with display is an easy-to-use, versatile device which can be used for a wide range of logging applications. The OM-DVTH records and instantly displays trends for temperature, humidity and dew point. With the OM-DVTH you can monitor real time measurements for instant environmental conditions. When you're ready, download over 40,000 data points to your PC for further analysis. Data logging has never been this visual.

The OM-DVTH is capable of sampling as fast as once per second or as slow as every 18 hours. A total of 43,344 temperature measurements can be stored in the data logger memory if only temperature is measured, or 21,672 measurements for temperature, humidity and dew point if all three parameters are measured.

Easy-to-use Windows software is included with the OM-DVTH. The software is a full-featured program that allows you to set up all data logger functions including sampling rate, logging duration, start mode, logging mode, and high and low temperature and relative humidity alarm values. Once data has been logged, the program then allows you to download data from the logger, plot the data and export the data to an ASCII text or Excel file format for further analysis.

### Specifications LOGGER

**Text Display:** Displays real time temperature, humidity and dew point; also displays logging summary, sample rate, memory used and memory left  
**Graph Display:** Shows measurement trends graphically; graph can be scrolled through the entire logged data

### Sample Point Capacity:

43,344 points for temperature only; 21,672 points for temperature, humidity and dew point

**Alarms:** Visual over and under alarm indicator for temperature and humidity (dew point alarms are not available)

**Calibration:** User single point offset calibration is available through software for both temperature and humidity; calibration is password protected

### Operating Temperature:

-10 to 65°C (15 to 150°F)

### Temperature Accuracy:

±0.5°C (±1°F)

**Temperature Resolution:** 0.01°C (0.01°F)

### Relative Humidity Range:

0 to 99% RH, non-condensing

### Relative Humidity Accuracy:

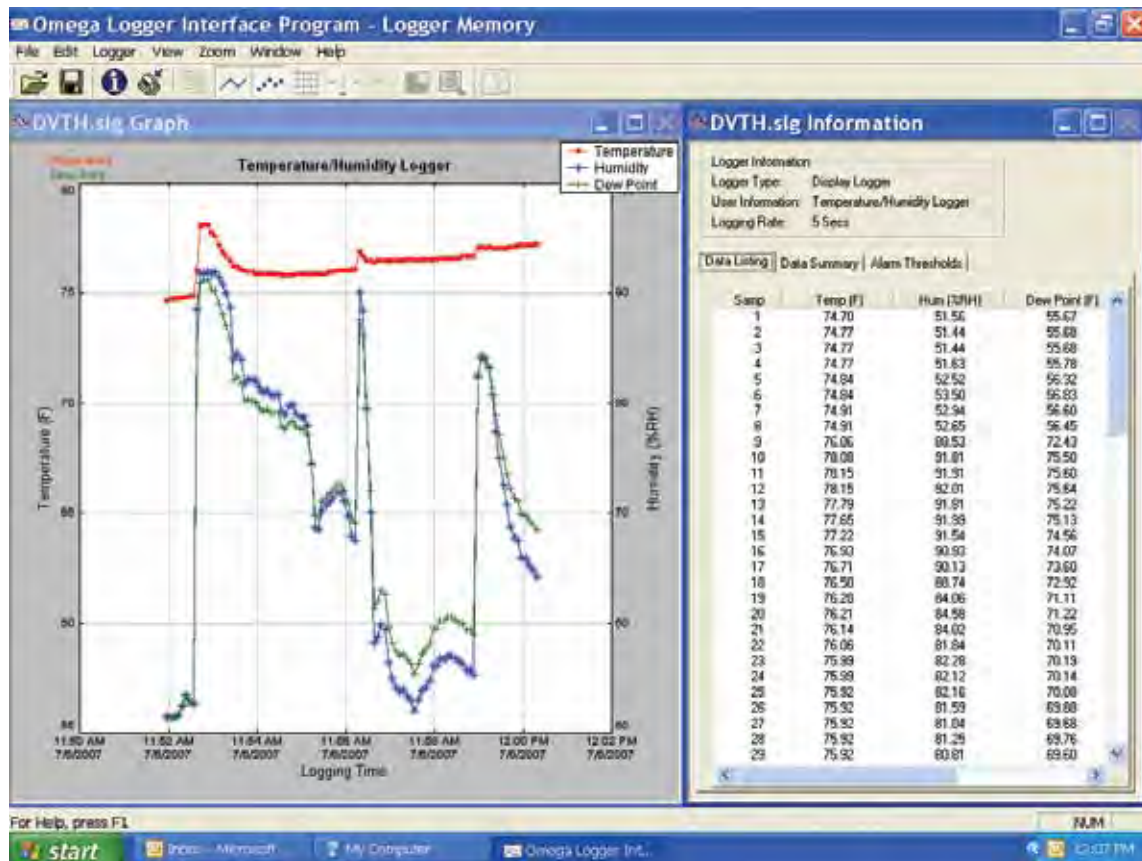
±2% RH, from 10 to 90% RH

### Relative Humidity Resolution:

0.01% RH

**Time Accuracy:** ±100 ppm @ 75°F

**Display:** LCD



Windows software displays data in graphical or tabular format.

**Storage Temperature:** -20 to 70°C (-5 to 160°F)

**Dimensions:**  
7.7 H x 10.2 W x 3.8 cm D  
(3.05 x 4 x 1.5")

**Weight:** 200 g (7.0 oz)

**Power:** 3 "AA" alkaline or lithium batteries (included)

**Battery Life:** 2 years (average use)

## SOFTWARE

**PC Interface:** USB port (USB cable is included)

**Sampling Interval:** User selectable from 1 second to 18 hours, in 1 second increments

**Data Security:** Unique factory set logger ID; recording session counter; password protected calibration

**Operating System Compatibility:** Windows XP/VISTA/7 (32- and 64-bit)

**Minimum System Requirements:** 5MB of free disk space, 800 x 600 screen resolution, 1 free USB port

**Recording Start:** On button press, immediate after setup, or at a user specified date and time

**Recording Mode:** Stop on memory full, or continuous recording with memory rollover

**Real Time Status:** Visual indication through the status LED; software real time status

**User Calibration:** Password protected calibration for each channel

**User Information:** Up to 30 characters

**Logger Channels:** User selectable; disabling channels increases the storage capacity of the other channels

**Units:** US and metric

**Data Format:** Exportable to text or Excel files



OMEGACARE<sup>SM</sup> extended warranty program is available for models shown on this page. Ask your sales representative for full details when placing an order. OMEGACARE<sup>SM</sup> covers parts, labor and equivalent loaners.

**To Order Visit [omega.com/om-dvth](http://omega.com/om-dvth) for Pricing and Details**

Model No.	Description
OM-DVTH	Temperature/relative humidity data logger with display

Comes complete with operator's manual, Windows software on CD-ROM, 1.8 m (6') USB interface cable and 3 "AA" alkaline or lithium batteries.

**Ordering Example:** OM-DVTH, temperature/relative humidity data logger with display and OCW-1, OMEGACARE<sup>SM</sup> extends standard 1 year warranty to a total of 2 years.