

LARGE-ID THROUGH-HOLE LOAD CELLS 2.00 TO 3.13" ID

LC8313/LC8400 Large Series

Compression

0-1000 lb to 0-100K lb

0-455 kg to 0-45,372 kg

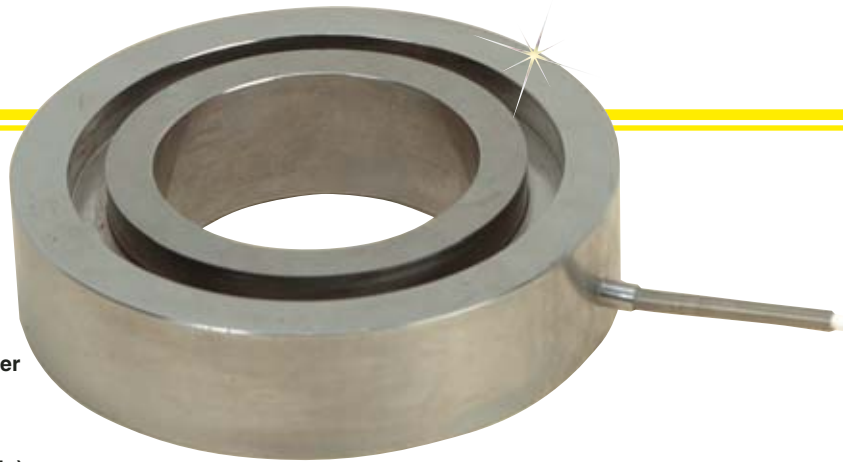
1 Newton = 0.2248 lb

1 daNewton = 10 Newtons

1 lb = 454 g

1 t = 1000 kg = 2204 lb

LC8400-213-10K,
\$480, shown smaller
than actual size.



Starts at
\$480



- ✓ For Large-ID Applications
- ✓ All Stainless Steel Construction
- ✓ Rugged Industrial Design

The LC8313, LC8400, and LC8450 Series donut load cells are space-saving solutions to applications requiring a large through-hole. With their rugged construction and design, these load cells are ideal for applications such as loading forces on large bolts or other suspended load applications. These series, with their all stainless steel construction and environmental protection, have proved reliable in tough industrial applications.

SPECIFICATIONS

Output: 2 mV/V nominal

Input: 10 Vdc (15 V max)

Accuracy Class: ±0.5% linearity, hysteresis and repeatability combined

Zero Balance: ±2.0% FSO

Operating Temp Range: -54 to 121°C (-65 to 250°F)

Compensated Temp Range: 16 to 71°C (60 to 160°F)

Thermal Effects:

Zero: ±0.009% FSO/°C

Span: ±0.018% rdg/°C

Safe Overload: 150% of capacity

Ultimate Overload: 300% of capacity

Input Resistance: 360 Ω minimum

Output Resistance: 350 ±5 Ω

Construction: 17-4 PH stainless steel

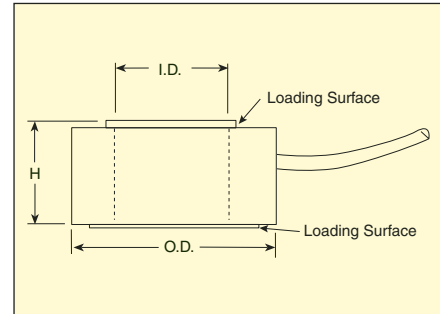
Electrical: 1.5 m (5') 4-conductor shielded cable

Protection Class: IP65

Dimensions: mm (in)

MODEL	OD	H
LC8313	80 (3.13)	13 (0.50)
LC8400 (1K to 50K)	102 (4.00)	25 (1.00)
LC8400 (≥100K)	102 (4.00)	51 (2.00)
LC8450	114 (4.50)	32 (1.25)

WIRE	CONNECTION
GN	+Output
WT	-Output
BK	-Input
RD	+Input



MOST POPULAR SIZES HIGHLIGHTED!

INSIDE DIAMETERS (ID)	+ = MOST POPULAR X = AVAILABLE			
MODEL	2.00"	2.13"	3.00"	3.13"
LC8313	X	+		
LC8400	X	+		
LC8450			X	+

MOST POPULAR MODELS HIGHLIGHTED!

To Order (Specify Model Number)

CAPACITY		MODEL NO.	PRICE	COMPATIBLE METERS*
Model LC8313 with a 3.13" OD and Selectable ID				
1 K lb	455 kg	LC8313-[*]-1K	\$480	DP41-S, DP25B-S, DPiS
3 K lb	1361 kg	LC8313-[*]-3K	480	DP41-S, DP25B-S, DPiS
5 K lb	2269 kg	LC8313-[*]-5K	480	DP41-S, DP25B-S, DPiS
7.5 K lb	3403 kg	LC8313-[*]-7.5K	480	DP41-S, DP25B-S, DPiS
10 K lb	4537 kg	LC8313-[*]-10K	480	DP41-S, DP25B-S, DPiS
Model LC8400 with a 4.00" OD and Selectable ID				
1 K lb	455 kg	LC8400-[*]-1K	480	DP41-S, DP25B-S, DPiS
3 K lb	1361 kg	LC8400-[*]-3K	480	DP41-S, DP25B-S, DPiS
5 K lb	2269 kg	LC8400-[*]-5K	480	DP41-S, DP25B-S, DPiS
10 K lb	4537 kg	LC8400-[*]-10K	480	DP41-S, DP25B-S, DPiS
25 K lb	11,343 kg	LC8400-[*]-25K	650	DP41-S, DP25B-S, DPiS
50 K lb	22,686 kg	LC8400-[*]-50K	650	DP41-S, DP25B-S, DPiS
100 K lb	45,372 kg	LC8400-[*]-100K	750	DP41-S, DP25B-S, DPiS
200 K lb	90,744 kg	LC8400-[*]-200K	750	DP41-S, DP25B-S, DPiS
Model LC8450 with a 4.50" OD and Selectable ID				
1 K lb	455 kg	LC8450-[*]-1K	480	DP41-S, DP25B-S, DPiS
3 K lb	1361 kg	LC8450-[*]-3K	480	DP41-S, DP25B-S, DPiS
5 K lb	2269 kg	LC8450-[*]-5K	480	DP41-S, DP25B-S, DPiS
10 K lb	4537 kg	LC8450-[*]-10K	480	DP41-S, DP25B-S, DPiS

Comes with 5-point NIST-traceable calibration.

* See section D for compatible meters.

[*] Select ID from table above to complete model number.

Ordering Examples: LC8313-200-3K, 3000 lb capacity load cell, 3.13" OD and 2.00" ID,

\$480. LC8400-200-10K, 10,000 lb capacity load cell, 4.00" OD and 2.00" ID, \$480.

LC8400-213-25K, 25,000 lb capacity load cell, 4.00" OD and 2.13" ID, \$650.

LC8450-313-5K, 5000 lb capacity load cell, 4.50" OD and 3.13" ID, \$480.

omega.co.uk[®]

Your One-Stop Source for Process Measurement and Control!

Freephone 0800 488 488 | International +44(0) 161 777 6622 | Fax +44(0) 161 777 6622 | Sales@omega.co.uk

www.omega.co.uk



UNITED STATES

www.omega.com

1-800-TC-OMEGA
Stamford, CT.

CANADA

www.omega.ca

Laval(Quebec)
1-800-TC-OMEGA

GERMANY

www.omega.de

Deckenfronn, Germany
0800-8266342

UNITED KINGDOM

www.omega.co.uk

Manchester, England
0800-488-488
+44-(0)161-777-6611

FRANCE

www.omega.fr

0800-466-342

BENELUX

www.omega.nl

0800-099-33-44



More than 100,000 Products Available!

• Temperature

Calibrators, Connectors, General Test and Measurement Instruments, Handheld Instruments for Temperature Measurement, Ice Point References, Indicating Labels, Crayons, Cements and Lacquers, Infrared Temperature Measurement Instruments, Recorders, Relative Humidity Measurement Instruments, PT100 Probes, PT100 Elements, Temperature & Process Meters, Timers and Counters, Temperature and Process Controllers and Power Switching Devices, Thermistor Elements, Probes and Assemblies, Thermocouples, Thermowells and Head and Well Assemblies, Transmitters, Thermocouple Wire, RTD Probes

• Flow and Level

Air Velocity Indicators, Doppler Flowmeters, Level Measurement, Magnetic Flowmeters, Mass Flowmeters, Pitot Tubes, Pumps, Rotameters, Turbine and Paddle Wheel Flowmeters, Ultrasonic Flowmeters, Valves, Variable Area Flowmeters, Vortex Shedding Flowmeters

• pH and Conductivity

Conductivity Instrumentation, Dissolved Oxygen Instrumentation, Environmental Instrumentation, pH Electrodes and Instruments, Water and Soil Analysis Instrumentation

• Data Acquisition

Communication Products and Converters, Data Acquisition and Analysis Software, Data Loggers Plug-in Cards, Signal Conditioners, USB, RS232, RS485, Ethernet and Parallel Port Data Acquisition Systems, Wireless Transmitters and Receivers

• Pressure, Strain and Force

Displacement Transducers, Dynamic Measurement Force Sensors, Instrumentation for Pressure and Strain Measurements, Load Cells, Pressure Gauges, Pressure Reference Section, Pressure Switches, Pressure Transducers, Proximity Transducers, Regulators, Pressure Transmitters, Strain Gauges, Torque Transducers, Valves

• Heaters

Band Heaters, Cartridge Heaters, Circulation Heaters, Comfort Heaters, Controllers, Meters and Switching Devices, Flexible Heaters, General Test and Measurement Instruments, Heater Hook-up Wire, Heating Cable Systems, Immersion Heaters, Process Air and Duct, Heaters, Radiant Heaters, Strip Heaters, Tubular Heaters