

# GENERAL PURPOSE "ICE CUBE" PLUG-IN RELAYS FOR HIGH CURRENT APPLICATIONS



D7PF2AA, \$11.25,  
shown slightly larger  
than actual size.



D7PF4AA, \$17.75,  
shown slightly  
larger than  
actual size.



\* DPF series only when  
used with D7PA2 socket

## D7R FEATURES

- Arc Barrier Equipped Relay with High Dielectric Strength
- Panel, DIN Rail and Flange Mounting

## D7PF FEATURES

- Flag Indicator Shows Relay Status in Manual or Powered Condition
- Bi-Polar LED Status Lamp Allows for Reverse Polarity Applications
- Shows Coil ON or OFF Status
- Ideal in Low Light Conditions
- Color Coded Pushbutton Identifies AC Coils with Red or DC Coils with Blue Pushbuttons
- Allows for Manual Operation of Relay Without the Need for Coil Power
- Ideal for Field Service Personnel to Test Control Circuits
- Lock Down Door, when Activated, Holds Pushbutton and Contacts in the Operate Position
- Excellent for Analyzing Circuit Problems
- Finger-Grip Cover Allows Operator to Remove Relays from Sockets More Easily Than Conventional Relays
- White Plastic I.D. Tag/Write Label Used for Identification of Relays in Multi-Relay Circuits

## SPECIFICATIONS (D7PR RELAY)

**Rated Load (Resistive Load\*):**  
120/240 Vac 15 A, 30 Vdc 15 A  
**Rated Load (Inductive Load\*):**  
120/240 Vac 10 A, 30 Vdc 7 A  
**Carry Current:** 15 A  
**Max Operating Voltage:**  
250 Vac/125 Vdc  
**Max Operating Current:** 15 A  
**Contact Material:** AgCdO  
**Max Switching Capacity (Resistive Load\*):** 1700 VA 360 W  
**Max Switching Capacity (Inductive Load\*):** 1100 VA 170 W  
**Min Permissible Load:** 100 mA, 5 Vdc  
**Pickup Voltage (Max):** 80%  
**Drop Out Voltage (Min):** 30% AC, 10% DC  
**Voltage (Max):** 110%  
**Mechanical Life (Min):** 10,000,000 AC, 100,000,000 DC  
**Electrical Life @ All Contact Ratings (Min):** 200,000  
**Maximum hp Rating (Resistive Load\*):** ½ hp (120 Vac)  
**Maximum hp Rating (Inductive Load\*):** ½ hp (240 Vac)  
*\* Resistive load p.f. = 1, inductive load p.f. = 0.4, L/R = 7 ms*

## SPECIFICATIONS (D7PF)

**(RESISTIVE LOAD PF=1.0)**  
**Coil Pickup Voltage (Max):** 85% AC; 80% DC (% of nominal)  
**Coil Drop Out Voltage (Min):** 10% AC; 10% DC (% of nominal)  
**Coil Maximum Voltage:** 110% of nominal

**Coil Insulation System per, UL Standard 1446: Class B 130°C (266°F)**

**Contact Rated Load:**

**D7PF2:** 120 Vac to 15 A, 277 Vac, 28 Vdc to 12 A, 220 Vdc to 0.5 A

**D7PF4:** 120 Vac, 28 Vdc to 15 A, 277 Vac to 12 A, 220 Vdc to 0.5 A

**Maximum hp Ratings:**

**D7PF2:** ½ hp, 120 Vac, 1 hp, 250 Vac

**D7PF4:** ½ hp, 120 Vac, ¾ hp, 250 Vac

**Contact Material:** Silver alloy, gold flashed

**Pilot Duty:** B300

**Utilization Category (IEC):** AC-15

**Min Permissible Load:** 100 mA @ 5 Vdc or 0.5 W

**Contact Resistance:** 100 Milliohms, max @ 6V, 1 A

**Dielectric Strength (Coil to Contacts):** 2500 Vrms

**Dielectric Strength (Across Open Contacts):** 1000 Vrms

**Dielectric Strength (Pole to Pole):** 2500 Vrms

**Insulation Resistance:** 100 Megohms min @ 500 Vdc

**Operating Temperature:** -40 to 70°C (-40 to 158°F)

**Storage Temperature:** -40 to 105°C (-40 to 221°F)

**Life Expectancy (At Rated Resistive), Load:**

**D7PF2:** 200,000, operations

**D7PF4:** 150,000, operations

**Life Expectancy (Mechanical at No Load):** 10 million operations

**Approximate Weight:**

**D7PF2:** 36 g (0.079 lb)

**D7PF4:** 80 g (0.176 lb)



## RELAY/SOCKET COMPATIBILITY GUIDE

RELAY	SINGLE SOCKET AND HOLD DOWN SPRING/CLIP	SOCKET 10 PACK	HOLD DOWN SPRING 10 PACK	MOUNTING STYLE
D7PF2	D7PF2-BC	D7PA5	PQC-1342	Panel
D7PF2	D7PF2A-BC	D7PAA	PQC-1342	DIN Rail
D7PF4	D7PF4-B	D7PA4	NA	DIN Rail
D7PR1	D7PR2-BC	D7PA2	PMC-A1	DIN Rail
D7PR1	D7PR5-BC	D7PA5	PMC-A1	Panel
D7PR2	D7PR2-BC	D7PA2	PMC-A1	DIN Rail
D7PR2	D7PR5-BC	D7PA5	PMC-A1	Panel
D7PR3	D7PR3-BC	D7PA3	PYC-B2	DIN Rail
D7PR4	D7PR4-BC	D7PA4	PYC-B2	DIN Rail

## SOCKET SPECIFICATIONS

SOCKET	DESCRIPTION	ELECTRICAL RATING	MOUNTING TORQUE	HOOK-UP WIRE RANGE
<b>D7PAA</b>	1 and 2 pole DIN rail mount, finger safe®	16 A, 300V	8 to 10 in-lbs	20 to 12 AWG
<b>D7PA2</b>	1 and 2 pole DIN rail mount	15 A, 250V	0.785 Nm to 1.18	14 AWG max
<b>D7PA3</b>	3 pole DIN rail mount	10 A, 300V	7 to 8 in-lb	12 to 22 AWG solid or stranded
<b>D7PA4</b>	4 pole DIN rail mount	10 A, 300V	7 to 8 in-lb	12 to 22 AWG solid or stranded
<b>D7PA5</b>	1 and 2 pole panel mount	15 A, 250V	NA	14 AWG max

## RELAY COIL RESISTANCE

RELAY	VOLTAGE	Ω	MILLIAMPS*	RELAY	VOLTAGE	Ω	MILLIAMPS*
D7PF2	24 Vdc	650	37	D7PR2	24 Vac	180	41
D7PF2	120 Vac	3830	12	D7PR2	120 Vac	4430	11
D7PF4	120 Vac	2200	188	D7PR3	120 Vac	2700	12.6
D7PR1	24 Vdc	750	32	D7PR4	24 Vdc	360	67
D7PR1	120 Vac	4430	11	D7PR4	120 Vac	2000	14.8

\* At 60 Hz for AC coils.



D7PR2A, \$10.50, shown slightly larger than actual size.



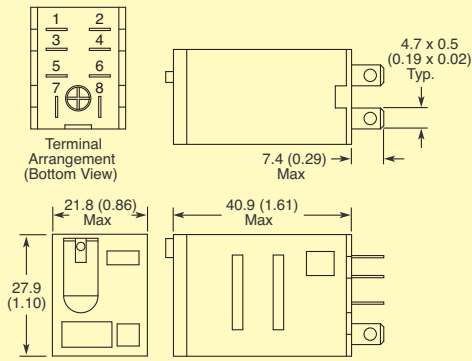
D7PR3A, \$12, shown slightly larger than actual size.



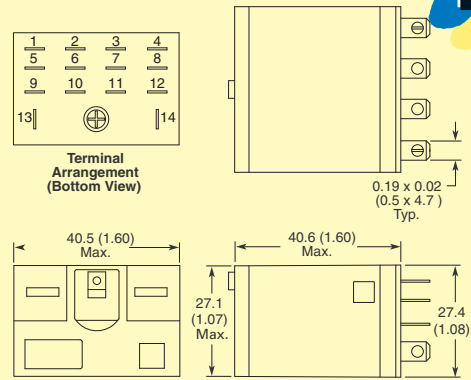
D7PA2-10PK, \$70/pkg of 10, shown slightly larger than actual size.



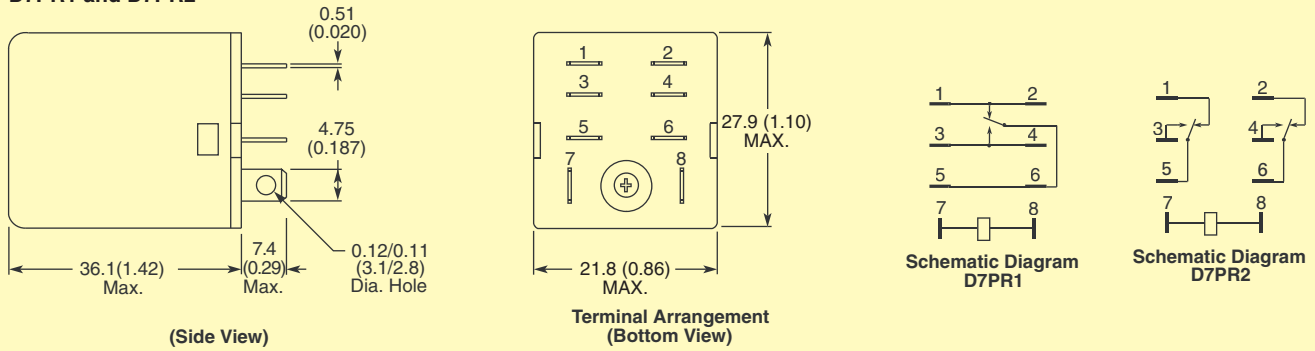
### D7PF2



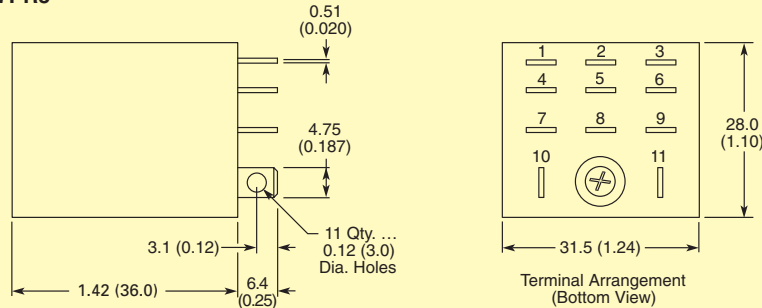
### D7PF4 and D7PR4



### D7PR1 and D7PR2

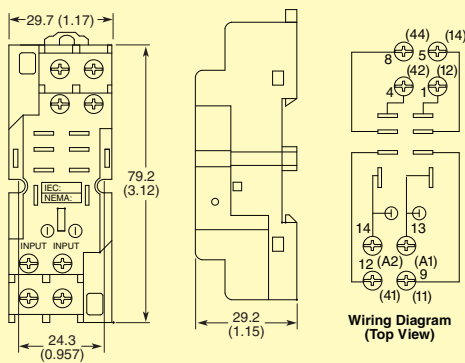


### D7PR3

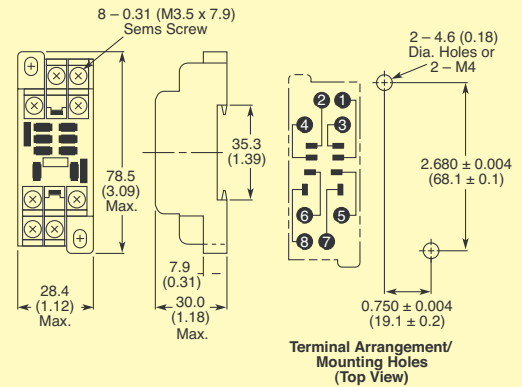


Dimensions: mm (in)

### D7PAA

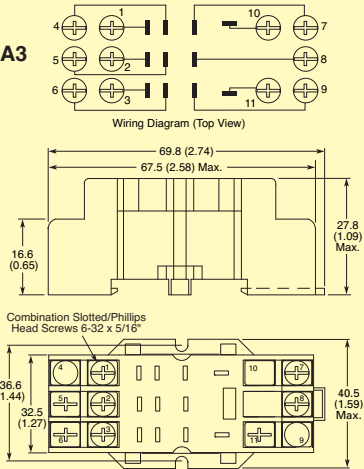


### D7PA2

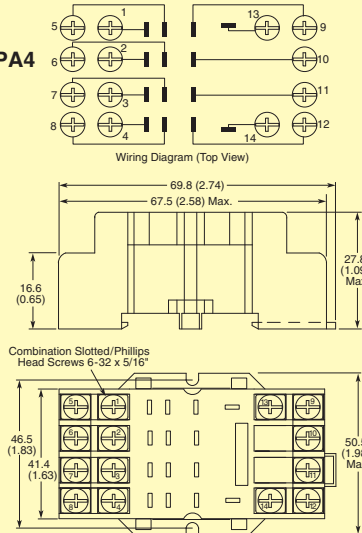




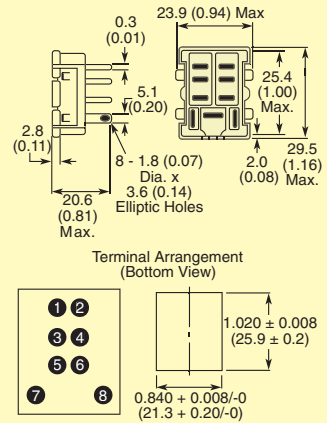
**D7PA3**



**D7PA4**



**D7PA5**



Dimensions: mm (in)

**To Order (Specify Model Number)**

**MOST POPULAR MODELS HIGHLIGHTED!**

MODEL NO.	PRICE	DESCRIPTION
<b>D7PF FULL FEATURED RELAYS WITH LED TEST BUTTON, FLAG INDICATOR, LOCK-DOWN DOOR, FINGER-GRIP COVER, ID TAG</b>		
D7PF2AA	\$11.25	DPDT relay with 120 Vac coil voltage, requires D7PA5 socket
D7PF2AT1	11.25	DPDT relay with 24 Vdc coil voltage, requires D7PA5 socket
D7PF4AA	17.75	4PDT relay with 120 Vac coil voltage, requires D7PA4 socket
<b>D7PR STANDARD RELAYS</b>		
D7PR11T1	\$11.75	SPDT with 24 Vdc coil voltage, indicating light, requires D7PA2 or D7PA5 socket
D7PR1A	9.00	SPDT relay with 120 Vac coil voltage, requires D7PA2 or D7PA5 socket
D7PR2A	10.50	DPDT relay with 120 Vac coil, requires D7PA2 or D7PA5 socket
D7PR2T	10.50	DPDT relay with 24 Vac coil voltage, requires D7PA2 or D7PA5 socket
D7PR2T1	10.50	DPDT relay with 24 Vdc coil voltage requires D7PA2 or D7PA5 socket
D7PR3A	13.00	3PDT relay with 120 Vac coil voltage, requires D7PA3 socket
D7PR4A	15.50	4PDT relay with 120 Vac coil voltage, requires D7PA4 socket
D7PR4T1	15.50	4PDT relay with 24 Vdc coil voltage, requires D7PA4 socket

Ordering Examples: Ten D7PF2AA relays, D7PA5-10PK sockets, PMC-A1-10PK, hold down clips,  $(\$11.25 \times 10) + 39 + 14 = \$165.50$ .  
Two D7PR4A, 4PDT relays with 120 Vac coil voltage, two D7PR4-BC, 4 pole DIN rail mount sockets and hold down clips,  $(\$15.50 \times 2) + (14 \times 2) = \$59$ .

**ACCESSORIES**

MODEL NO. FOR SINGLE SOCKET AND HOLD DOWN SPRING/CLIP	PRICE	MODEL NO. SOCKETS ONLY	PRICE 10 PK	MODEL NO. HOLD DOWN SPRING/CLIP ONLY	PRICE 10 PK	MOUNTING STYLE
D7PF2-BC	\$5	D7PA5-10PK	\$39	PQC-1342-10PK	\$6	Panel
D7PF2A-BC	8	D7PAA-10PK	60	PQC-1342-10PK	6	DIN rail
D7PF4-B	11	D7PA4-10PK	91	Not required	—	DIN rail
D7PR2-BC	10	D7PA2-10PK	70	PMC-A1-10PK	14	DIN rail
D7PR5-BC	7	D7PA5-10PK	39	PMC-A1-10PK	14	Panel
D7PR3-BC	13	D7PA3-10PK	86	PYC-B2-10PK	20	DIN rail
D7PR4-BC	14	D7PA4-10PK	91	PYC-B2-10PK	20	DIN rail

\* See relay/socket compatibility guide for selecting correct spring.

# omega.co.uk<sup>®</sup>

Your One-Stop Source for Process Measurement and Control!

Freephone 0800 488 488 | International +44(0) 161 777 6622 | Fax +44(0) 161 777 6622 | Sales@omega.co.uk

[www.omega.co.uk](http://www.omega.co.uk)



#### UNITED STATES

[www.omega.com](http://www.omega.com)

1-800-TC-OMEGA  
Stamford, CT.

#### UNITED KINGDOM

[www.omega.co.uk](http://www.omega.co.uk)

Manchester, England  
0800-488-488  
+44-(0)161-777-6611

#### CANADA

[www.omega.ca](http://www.omega.ca)

Laval(Quebec)  
1-800-TC-OMEGA

#### FRANCE

[www.omega.fr](http://www.omega.fr)

0800-466-342

#### GERMANY

[www.omega.de](http://www.omega.de)

Deckenfronn, Germany  
0800-8266342

#### BENELUX

[www.omega.nl](http://www.omega.nl)

0800-099-33-44



## More than 100,000 Products Available!

### • Temperature

Calibrators, Connectors, General Test and Measurement Instruments, Handheld Instruments for Temperature Measurement, Ice Point References, Indicating Labels, Crayons, Cements and Lacquers, Infrared Temperature Measurement Instruments, Recorders, Relative Humidity Measurement Instruments, PT100 Probes, PT100 Elements, Temperature & Process Meters, Timers and Counters, Temperature and Process Controllers and Power Switching Devices, Thermistor Elements, Probes and Assemblies, Thermocouples, Thermowells and Head and Well Assemblies, Transmitters, Thermocouple Wire, RTD Probes

### • Flow and Level

Air Velocity Indicators, Doppler Flowmeters, Level Measurement, Magnetic Flowmeters, Mass Flowmeters, Pitot Tubes, Pumps, Rotameters, Turbine and Paddle Wheel Flowmeters, Ultrasonic Flowmeters, Valves, Variable Area Flowmeters, Vortex Shedding Flowmeters

### • pH and Conductivity

Conductivity Instrumentation, Dissolved Oxygen Instrumentation, Environmental Instrumentation, pH Electrodes and Instruments, Water and Soil Analysis Instrumentation

### • Data Acquisition

Communication Products and Converters, Data Acquisition and Analysis Software, Data Loggers Plug-in Cards, Signal Conditioners, USB, RS232, RS485, Ethernet and Parallel Port Data Acquisition Systems, Wireless Transmitters and Receivers

### • Pressure, Strain and Force

Displacement Transducers, Dynamic Measurement Force Sensors, Instrumentation for Pressure and Strain Measurements, Load Cells, Pressure Gauges, Pressure Reference Section, Pressure Switches, Pressure Transducers, Proximity Transducers, Regulators, Pressure Transmitters, Strain Gauges, Torque Transducers, Valves

### • Heaters

Band Heaters, Cartridge Heaters, Circulation Heaters, Comfort Heaters, Controllers, Meters and Switching Devices, Flexible Heaters, General Test and Measurement Instruments, Heater Hook-up Wire, Heating Cable Systems, Immersion Heaters, Process Air and Duct, Heaters, Radiant Heaters, Strip Heaters, Tubular Heaters