



TYPE 12 TWO-DOOR ENCLOSURES

Starts at
\$1007



SCE-604808LP, \$1007, shown smaller than actual size.

- 0.104" Carbon Steel or Stainless Steel
- Seams Continuously Welded and Ground Smooth, No Holes or Knockouts
- Strong, Rigid Construction with Body Stiffeners
- Gasketed Overlapping Doors Eliminate Need for Center Post
- Black Zinc Die Cast Keylocking/ Padlocking Handle
- 3-Point Latching Mechanism
- Latch Rods Have Rollers for Easier Door Closing
- Concealed Hinge
- Removable Print Pocket Provided On Door with 3-Point Latch
- 12" Removable Floor Stands
- Heavy Duty Lifting Eyes
- Panel Supports
- Oil Resistant Door Gasket
- Collar Studs for Mounting Optional Panel
- Ground Stud on Door



Application

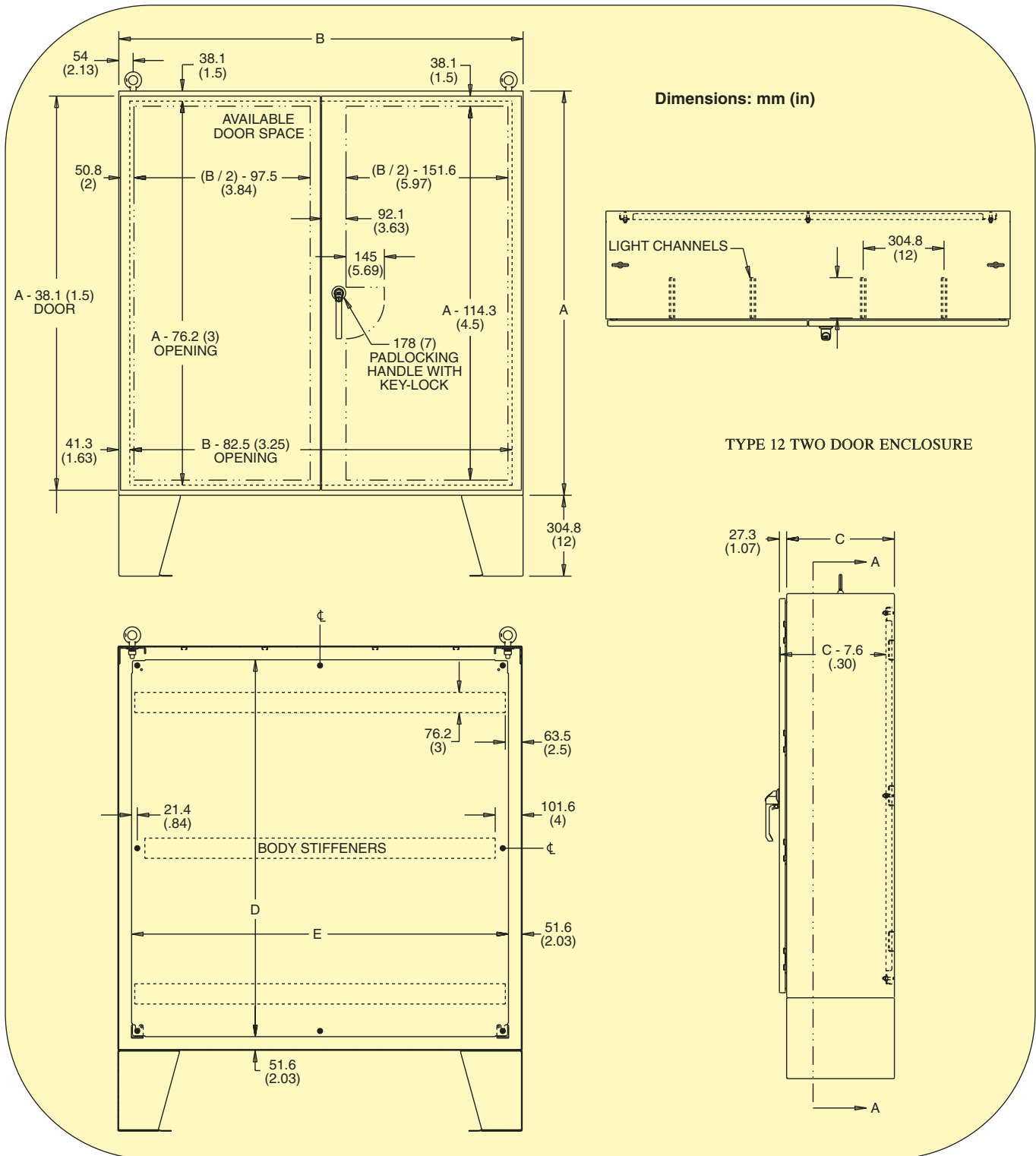
Designed to house electrical and electronic controls, instruments and components. Provides protection from dust, oil and water.

Finish

ANSI-61 recoatable gray finish over phosphatized surfaces. Stainless steel enclosures are Type 304 Stainless with #4 brushed finish. Optional panels are powder coated white.

Industry Standards

NEMA Type 12 & Type 13
UL Listed Type 12
CSA Tpe 12
IEC 60529 IP 55





SCE-604808LP,
\$1007, shown smaller
than actual size.

To Order (Specify Model Number)

MOST POPULAR MODELS HIGHLIGHTED!

TYPE 12 TWO-DOOR ENCLOSURES								
ENCLOSURES (in)					SUB-PANEL (in)			
MODEL NO.	PRICE	HEIGHT (A)	WIDTH (B)	DEPTH (C)	MODEL NO.	PRICE	HEIGHT (D)	WIDTH (E)
SCE-604808LP	\$1007	60.00	48.00	8.00	SCE-60P48	\$202	56.00	44.00
SCE-604810LP	1039	60.00	48.00	10.00	SCE-60P48	202	56.00	44.00
SCE-604812LP	1071	60.00	48.00	12.00	SCE-60P48	202	56.00	44.00
SCE-604816LP	1135	60.00	48.00	16.00	SCE-60P48	202	56.00	44.00
SCE-604824LP	1265	60.00	48.00	24.00	SCE-60P48	202	56.00	44.00
SCE-606010LP	1164	60.00	60.00	10.00	SCE-60P60	250	56.00	56.00
SCE-606012LP	1200	60.00	60.00	12.00	SCE-60P60	250	56.00	56.00
SCE-606016LP	1271	60.00	60.00	16.00	SCE-60P60	250	56.00	56.00
SCE-606024LP	1415	60.00	60.00	24.00	SCE-60P60	250	56.00	56.00
SCE-726010ULP	1331	72.00	60.00	10.00	SCE-72P60	298	68.00	56.00
SCE-726012ULP	1372	72.00	60.00	12.00	SCE-72P60	298	68.00	56.00
SCE-726016ULP	1453	72.00	60.00	16.00	SCE-72P60	298	68.00	56.00
SCE-726024ULP	1617	72.00	60.00	24.00	SCE-72P60	298	68.00	56.00
SCE-727210ULP	1483	72.00	72.00	10.00	SCE-72P72	355	68.00	68.00
SCE-727212ULP	1528	72.00	72.00	12.00	SCE-72P72	355	68.00	68.00
SCE-727216ULP	1617	72.00	72.00	16.00	SCE-72P72	355	68.00	68.00
SCE-727224ULP	1794	72.00	72.00	24.00	SCE-72P72	355	68.00	68.00
TYPE 12 TWO-DOOR STAINLESS STEEL ENCLOSURES								
ENCLOSURES (in)					SUB-PANEL (in)			
MODEL NO.	PRICE	HEIGHT (A)	WIDTH (B)	DEPTH (C)	MODEL NO.	PRICE	HEIGHT (D)	WIDTH (E)
SCE-604808SSLP	\$4430	60.00	48.00	8.00	SCE-60P48	\$202	56.00	44.00
SCE-604810SSLP	4572	60.00	48.00	10.00	SCE-60P48	202	56.00	44.00
SCE-604812SSLP	4716	60.00	48.00	12.00	SCE-60P48	202	56.00	44.00
SCE-604816SSLP	4994	60.00	48.00	16.00	SCE-60P48	202	56.00	44.00
SCE-604824SSLP	5565	60.00	48.00	24.00	SCE-60P48	202	56.00	44.00
SCE-606010SSLP	5122	60.00	60.00	10.00	SCE-60P60	250	56.00	56.00
SCE-606012SSLP	5279	60.00	60.00	12.00	SCE-60P60	250	56.00	56.00
SCE-606016SSLP	5595	60.00	60.00	16.00	SCE-60P60	250	56.00	56.00
SCE-606024SSLP	6228	60.00	60.00	24.00	SCE-60P60	250	56.00	56.00
SCE-726010USSLP	5859	72.00	60.00	10.00	SCE-72P60	298	68.00	56.00
SCE-726012USSLP	6040	72.00	60.00	12.00	SCE-72P60	298	68.00	56.00
SCE-726016USSLP	6393	72.00	60.00	16.00	SCE-72P60	298	68.00	56.00
SCE-726024USSLP	7115	72.00	60.00	24.00	SCE-72P60	298	68.00	56.00
SCE-727210USSLP	6528	72.00	72.00	10.00	SCE-72P72	355	68.00	68.00
SCE-727212USSLP	6724	72.00	72.00	12.00	SCE-72P72	355	68.00	68.00
SCE-727216USSLP	7115	72.00	72.00	16.00	SCE-72P72	355	68.00	68.00
SCE-727224USSLP	7897	72.00	72.00	24.00	SCE-72P72	355	68.00	68.00

Ordering Example: SCE-604808LP Type 12 carbon steel two-door enclosure, \$1007.



UNITED STATES

www.omega.com
1-800-TC-OMEGA
Stamford, CT.

CANADA

www.omega.ca
Laval(Quebec)
1-800-TC-OMEGA

GERMANY

www.omega.de
Deckenpfronn, Germany
0800-8266342

UNITED KINGDOM

www.omega.co.uk
Manchester, England
0800-488-488

FRANCE

www.omega.fr
Guyancourt, France
088-466-342

CZECH REPUBLIC

www.omegaeng.cz
Karviná, Czech Republic
596-311-899

BENELUX

www.omega.nl
Amstelveen, NL
0800-099-33-44



More than 100,000 Products Available!

• Temperature

Calibrators, Connectors, General Test and Measurement Instruments, Glass Bulb Thermometers, Handheld Instruments for Temperature Measurement, Ice Point References, Indicating Labels, Crayons, Cements and Lacquers, Infrared Temperature Measurement Instruments, Recorders Relative Humidity Measurement Instruments, RTD Probes, Elements and Assemblies, Temperature & Process Meters, Timers and Counters, Temperature and Process Controllers and Power Switching Devices, Thermistor Elements, Probes and Assemblies, Thermocouples Thermowells and Head and Well Assemblies, Transmitters, Wire

• Flow and Level

Air Velocity Indicators, Doppler Flowmeters, Level Measurement, Magnetic Flowmeters, Mass Flowmeters, Pitot Tubes, Pumps, Rotameters, Turbine and Paddle Wheel Flowmeters, Ultrasonic Flowmeters, Valves, Variable Area Flowmeters, Vortex Shedding Flowmeters

• pH and Conductivity

Conductivity Instrumentation, Dissolved Oxygen Instrumentation, Environmental Instrumentation, pH Electrodes and Instruments, Water and Soil Analysis Instrumentation

• Data Acquisition

Auto-Dialers and Alarm Monitoring Systems, Communication Products and Converters, Data Acquisition and Analysis Software, Data Loggers Plug-in Cards, Signal Conditioners, USB, RS232, RS485 and Parallel Port Data Acquisition Systems, Wireless Transmitters and Receivers

• Pressure, Strain and Force

Displacement Transducers, Dynamic Measurement Force Sensors, Instrumentation for Pressure and Strain Measurements, Load Cells, Pressure Gauges, Pressure Reference Section, Pressure Switches, Pressure Transducers, Proximity Transducers, Regulators, Strain Gages, Torque Transducers, Valves

• Heaters

Band Heaters, Cartridge Heaters, Circulation Heaters, Comfort Heaters, Controllers, Meters and Switching Devices, Flexible Heaters, General Test and Measurement Instruments, Heater Hook-up Wire, Heating Cable Systems, Immersion Heaters, Process Air and Duct, Heaters, Radiant Heaters, Strip Heaters, Tubular Heaters