

TERMINAL BLOCKS OVERVIEW

Product Family Overview

The XB Series offers a complete terminal block system with a universal range of accessories. Marking, bridging and testing accessories are standardized across the different clamping technologies—reducing inventory and logistics costs. The modular terminal block design allows for use of the different terminal block types together or individually, providing the highest degree of flexibility.

Application Description

The metal portion of the XB Series terminal blocks are made from highgrade, strain-crack and corrosion-proof copper alloys. They won't experience any electrolytic corrosion or rusting, even when moisture is present. The metal surfaces are protected with a lead-free, galvanic nickel or tin plating.

The good electrical conductivity permits only a low temperature rise. The Polyamide 6.6 housings allow for operating temperatures up to 125°C and are certified for inflammability Class V0 in accordance with UL 94.

Features

Global Acceptance— The XB Series terminal blocks are designed to meet worldwide standards and the latest international requirements.

Flexible Plug-In Bridge System— All 3 technologies (screw, spring and IDC) use the same bridge system, allowing for individual potential distribution and quickly bridged connections among the same terminal block type or across different types. The XB Series terminal blocks have 2 bridge shafts arranged in 1 line, making flexible chain bridging and skip bridging between non-adjacent terminal blocks possible. Plug-in bridges are available from 2 to 50 positions. Reducing bridges are also available to connect a larger terminal block to a smaller one.




XBUT4RD-50PK
package of 50



XBUT4-50PK
package of 50

All models shown smaller than actual size.



XBUT4WH-50PK
package of 50



XBUT4BU-50PK
package of 50

Large Surface Area for Marking—

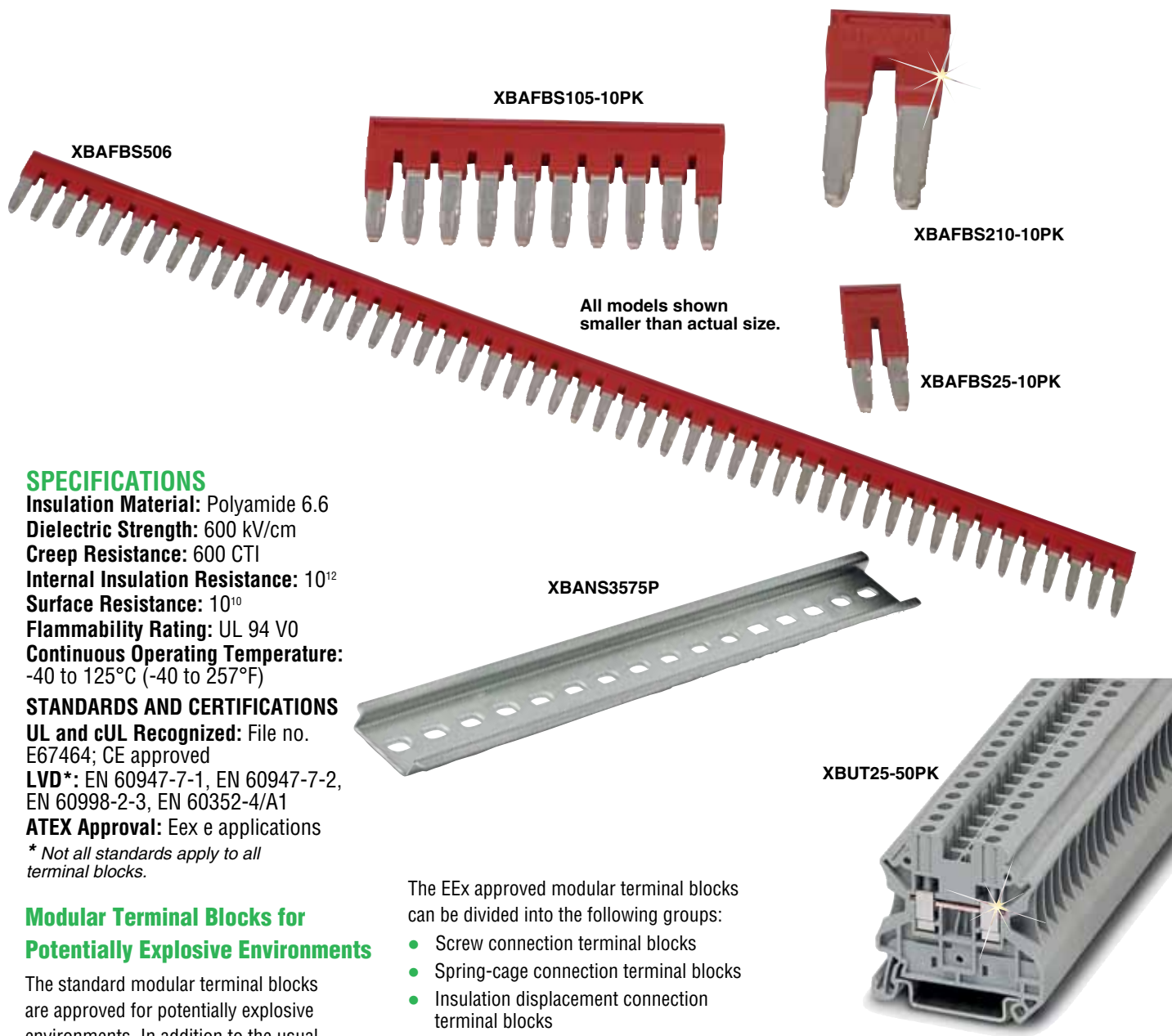
All XB Series terminal blocks have generously sized surface areas for labeling. This allows for clearly labeled wiring which results in reduced start-up time and simplifies activities such as testing and maintenance. There are provisions for marking individual terminal blocks and end stops, strips of terminal blocks, and large groups of terminal blocks.

Standardized Testing System—

All test plugs make contact in one of the easily accessible bridge shafts. A 2.3 mm diameter test plug is available for individual measuring wires. Modular test plugs are also available for more advanced testing.



XBUT4BK-50PK
package of 50



SPECIFICATIONS

Insulation Material: Polyamide 6.6

Dielectric Strength: 600 kV/cm

Creep Resistance: 600 CTI

Internal Insulation Resistance: 10¹²

Surface Resistance: 10¹⁰

Flammability Rating: UL 94 V0

Continuous Operating Temperature:

-40 to 125°C (-40 to 257°F)

STANDARDS AND CERTIFICATIONS

UL and cUL Recognized: File no.

E67464; CE approved

LVD*: EN 60947-7-1, EN 60947-7-2,

EN 60998-2-3, EN 60352-4/A1

ATEX Approval: Eex e applications

** Not all standards apply to all terminal blocks.*

Modular Terminal Blocks for Potentially Explosive Environments

The standard modular terminal blocks are approved for potentially explosive environments. In addition to the usual approvals, they also have been approved by a testing center authorized by the EU. No extra approval is required in intrinsic safety type applications. Modular terminal blocks on the internet address listed below fulfill the requirements for “increased safety” protection type when installation instructions are followed, and have a type examination certificate in accordance with the Ex directive Ex-RL 94/9/EU. These test certificates are recognized in all the EU member states and beyond.

The modular terminal blocks are approved for fitting in Zone 1, the Ex environment, as well as Zone 2. Zone 1 fitting is conditional upon terminal blocks being used in connection boxes approved for EEx e type protection and having the equivalent of at least IP54 protection.

The EEx approved modular terminal blocks can be divided into the following groups:

- Screw connection terminal blocks
- Spring-cage connection terminal blocks
- Insulation displacement connection terminal blocks
- Mini terminal blocks
- Terminal blocks for specialized applications

Identification

Explosion protected electrical equipment must be marked so that the safety characteristics are identifiable. The identification of electrical equipment is described in the harmonized standard EN 50014, as shown in the following example:

TABLE 55-1. EN 50014 STANDARD EXAMPLE	
Type Designation	XBUT25
Abbreviation of Explosion Protection	EEx e II
Protection Type Increased Safety “e”	e
Equipment Group	II
Mark of the Testing Body	KEMA
Approval Number	05ATEX2158 U

Identification in Accordance with ATEX-RL

Electrical equipment that is certified in accordance with the ATEX 100a guideline also receives identification describing the site for use.

TABLE 55-2. ATEX GUIDELINE EXAMPLE	
Manufacturing Data	02.01.2004
Address of the Manufacturer	Duncan, SC
Number of the Appointed Dept	344
Common Marking	Ex symbol
Equipment Group	II
Category	2
Use in Gas and/or Dust Atmospheres	G D

FEED-THROUGH TERMINAL BLOCK

XBUT Series



- Maintenance-Free Connections
- Global Acceptance
- Multi-Conductor Connections
- Flexible Plug-In Bridge System
- Large Surface Area for Marking
- Standardized Testing System
- Metal Parts Made of Tin-Plated Copper Alloy

The XBUT Series utilizes a screw connection system that is accepted worldwide and is suitable in most applications. The maintenance-free connection provides the reliability you expect.

Designed for applications with high demands, the XBUT Series screw terminal block has a maintenance-free wire connection. Tightening of the terminal screws is not necessary to ensure proper operation. The screw locking technique prevents the screws from backing out. Copper wires can be clamped without

pre-treatment or ferrules can be used for splicing protection. Multiple conductors can be connected in the same clamping mechanism, saving space.

The XBUT terminal blocks feature a compact design and maintenance-free screw connection. There is a double bridge shaft providing maximum flexibility. The double bridge shaft can accommodate individual chain bridging and step down bridging from other terminal blocks. There are numerous options for accessories, including those for testing and marking. Terminal blocks are available for wire cross-sections ranging from 12 AWG (2.5 mm²) to 0 AWG (150 mm²).

SPECIFICATIONS FOR XBUT25

Terminal Width: 5.2 mm

Maximum Wire Size: 12 AWG/2.5 mm²

IEC 60 947-7-1 in V/A/AWG:

800/32/26-12

EN 50 019¹ in V/A/AWG:

750/22 or 28/26-12

UL-cUL Ratings in V/A/AWG:

600/20/26-12

TECHNICAL DATA DIMENSIONS

Width/Length/Cover Width in mm

(inch): 5.2 (0.20)/46.9 (1.85)/2.2 (0.09)

Height for 35 x 7.5/35 x 15 in mm

(inch): 47.5 (1.87)/55.0 (2.17)

TECHNICAL DATA IN ACCORDANCE WITH IEC

Maximum Load Current in A/Cross Section in mm²: 32 / 4

Rated Surge Voltage in kV/

Contamination Class: 8 / 3

Surge Voltage Category/Insulating Material Group: III / II

CONNECTION CAPACITY

Stranded with Ferrule/with Ferrule and Plastic Sleeve in mm²:

0.25 to 2.5/0.25 to 2.5

MULTI-CONDUCTOR CONNECTION (SAME CROSS-SECTION)

Solid/Stranded in mm²:

0.14 to 1.5/0.14 to 1.5

Stranded with Ferrules without Plastic Sleeve in mm²: 0.25 to 1.5

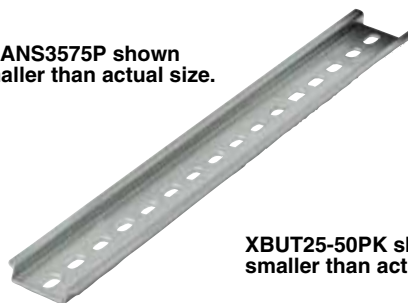
Stranded with Twin Ferrule with Plastic Sleeve in mm²: 0.5 to 1.5

Stripping Length in mm (inch): 9 (0.35)

Thread: M3

Torque in in-lb (Nm): 5.3 to 7.1 (0.6 to 0.8)

XBANS3575P shown smaller than actual size.



XBUT25-50PK shown smaller than actual size.



To Order Visit omega.com/xbut for Pricing and Details

MODEL NO.	DESCRIPTION
XBUT25-50PK	Gray single level connection, package of 50
XBUT25BU-50PK	Blue single level connection, package of 50
ACCESSORIES	
XBACUT10-10PK	Gray end cover, package of 10
XBATUT10-10PK	Gray partition plate, package of 10
XBAFBS25-10PK	Red 2 position plug-in bridge, package of 10
XBAFBS35-10PK	Red 3 position plug-in bridge, package of 10
XBAFBS55-10PK	Red 5 position plug-in bridge, package of 10
XBAFBS105-10PK	Red 10 position plug-in bridge, package of 10
XBAFBS505	Red 50 position plug-in bridge
XBATSPA14-10PK	Test adaptor package of 10
XBMZB5-10PK	5.2 mm white blank marker strip, package of 10
XBANS3575P	DIN rail 35 x 7.5 mm x 2 m slotted
XBANS3575U	DIN rail 35 x 7.5 mm x 2 m solid
XBANS3515P	DIN rail 35 x 15 mm x 2 m slotted
XBANS3515U	DIN rail 35 x 15 mm x 2 m slotted
XBAES35C-50PK	1-screw mounted end stop, package of 50
XBAES35T-50PK	3-screw mounted end stop, package of 50
XBAES35N-50PK	Snap-on end stop, package of 50

Comes complete with instruction sheet.

Note 1: EU type-examination certificate number KEMA 05ATEX2158U.

Ordering Example: XBUT25-50PK, gray terminal blocks, XBACUT10-10PK, gray end covers.

SPECIFICATIONS FOR XBUT4

Terminal Width: 6.2 mm

Maximum Wire Size: 10 AWG/4 mm²

IEC 60 947-7-1 in V/A/AWG: 800/41/26-10

EN 50 019' in V/A/AWG: 750/30 or 38/26-10

UL-cUL Ratings in V/A/AWG: 600/30/26-10

TECHNICAL DATA DIMENSIONS

Width/Length/Cover Width in mm (inch):

6.2 (0.24)/46.9 (1.85)/2.2 (0.09)

Height for 35 x 7.5/35 x 15 in mm (inch): 47.5 (1.87)/55.0 (2.17)

TECHNICAL DATA IN ACCORDANCE WITH IEC

Maximum Load Current in A/Cross-Section in mm²: 41/6

Rated Surge Voltage in kV/Contamination Class: 8/3

Surge Voltage Category/Insulating Material Group: III/I

Connection Capacity

Stranded with Ferrule/with Ferrule and Plastic Sleeve in mm²:

0.25 to 4/0.25 to 4

MULTI-CONDUCTOR CONNECTION (SAME CROSS-SECTION)

Solid/Stranded in mm²: 0.14 to 1.5/0.14 to 1.5

Stranded with Ferrules without Plastic Sleeve in mm²: 0.25 to 1.5

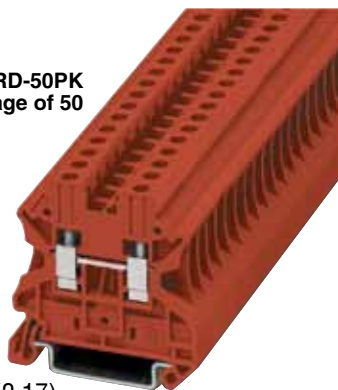
Stranded with Twin Ferrule with Plastic Sleeve in mm²: 0.5 to 2.5

Stripping Length in mm (inch): 9 (0.35)

Thread: M3

Torque in in-lb (Nm): 0.6 to 0.8 (5.3 to 7.1)

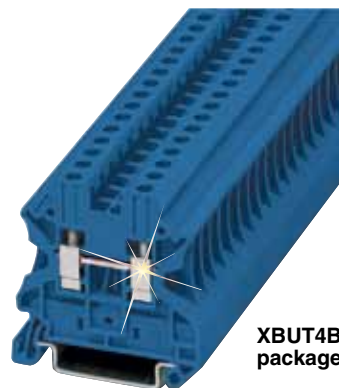
XBUT4RD-50PK
package of 50



XBUT4WH-50PK
package of 50



All models
shown smaller
than actual size.



XBUT4BU-50PK
package of 50

To Order *Visit omega.com/xbut for Pricing and Details*

MODEL NO.	DESCRIPTION
XBUT4-50PK	Gray single level connection, package of 50
XBUT4BU-50PK	Blue single level connection
XBUT4OR-50PK	Orange single level connection
XBUT4YE-50PK	Yellow single level connection
XBUT4RD-50PK	Red single level connection
XBUT4WH-50PK	White single level connection
XBUT4BK-50PK	Black single level connection
XBUT4GN-50PK	Green single level connection
ACCESSORIES	
XBACUT10-10PK	Gray end cover, package of 10
XBATUT10-10PK	Gray partition plate, package of 10
XBAFBS26-10PK	Red 2 position plug-in bridge, package of 10
XBAFBS36-10PK	Red 3 position plug-in bridge, package of 10
XBAFBS56-10PK	Red 5 position plug-in bridge, package of 10
XBAFBS106-10PK	Red 10 position plug-in bridge, package of 10
XBAFBS506	Red 50 position plug-in bridge, package of 10
XBATSPA14-10PK	Test adaptor, package of 10
XBMZB6-10PK	5.2 mm white blank marker strip, package of 10
XBANS3575P	DIN rail 35 x 7.5 mm x 2 m (1.4 x 0.30" x 6.6') slotted
XBANS3575U	DIN rail 35 x 7.5 mm x 2 m (1.4 x 0.30" x 6.6') solid
XBANS3515P	DIN rail 35 x 15 mm x 2 m (1.4 x 0.60" x 6.6') slotted
XBANS3515U	DIN rail 35 x 15 mm x 2 m (1.4 x 0.60" x 6.6') solid
XBAES35C-50PK	1-screw mounted end stop, package of 50
XBAES35T-50PK	3-screw mounted end stop, package of 50
XBAES35N-50PK	Snap-on end stop, package of 50

Note 1: EU type-examination certificate number KEMA 05ATEX2158U.

Ordering Example: **XBUT4-50PK**, blue terminal blocks, **XBUT4RD-50PK**, red terminal blocks, **XBANS3575P**, DIN rail.

SPECIFICATIONS FOR XBUT6

Terminal Width: 8.2 mm

Maximum Wire Size: 8 AWG/6 mm²

IEC 60 947-7-1 in V/A/AWG:

800/57/24-8

EN 50 019¹ in V/A/AWG:

750/40 or 50/24-8

UL-cUL Ratings in V/A/AWG:

600/50/24-8

TECHNICAL DATA DIMENSIONS

Width/Length/Cover Width in mm

(inch): 8.2 (0.32)/46.9 (1.85)/2.2 (0.09)

Height for 35 x 7.5/35 x 15 in mm

(inch): 47.5 (1.87)/55.0 (2.17)

TECHNICAL DATA IN

ACCORDANCE WITH IEC

Maximum Load Current in A/

Cross-Section in mm²: 57/10

Rated Surge Voltage in kV/

Contamination Class: 8/3

Surge Voltage Category/Insulating

Material Group: III/I

CONNECTION CAPACITY

Stranded with Ferrule/with Ferrule

and Plastic Sleeve in mm²:

0.25 to 6/0 .25 to 6

MULTI-CONDUCTOR CONNECTION

(SAME CROSS-SECTION)

Solid/Stranded in mm²:

0.2 to 2.5/0.2 to 2.5

Stranded with Ferrules without Plastic

Sleeve in mm²: 0.25 to 1.5

Stranded with Twin Ferrule with

Plastic Sleeve in mm²: 0.5 to 4

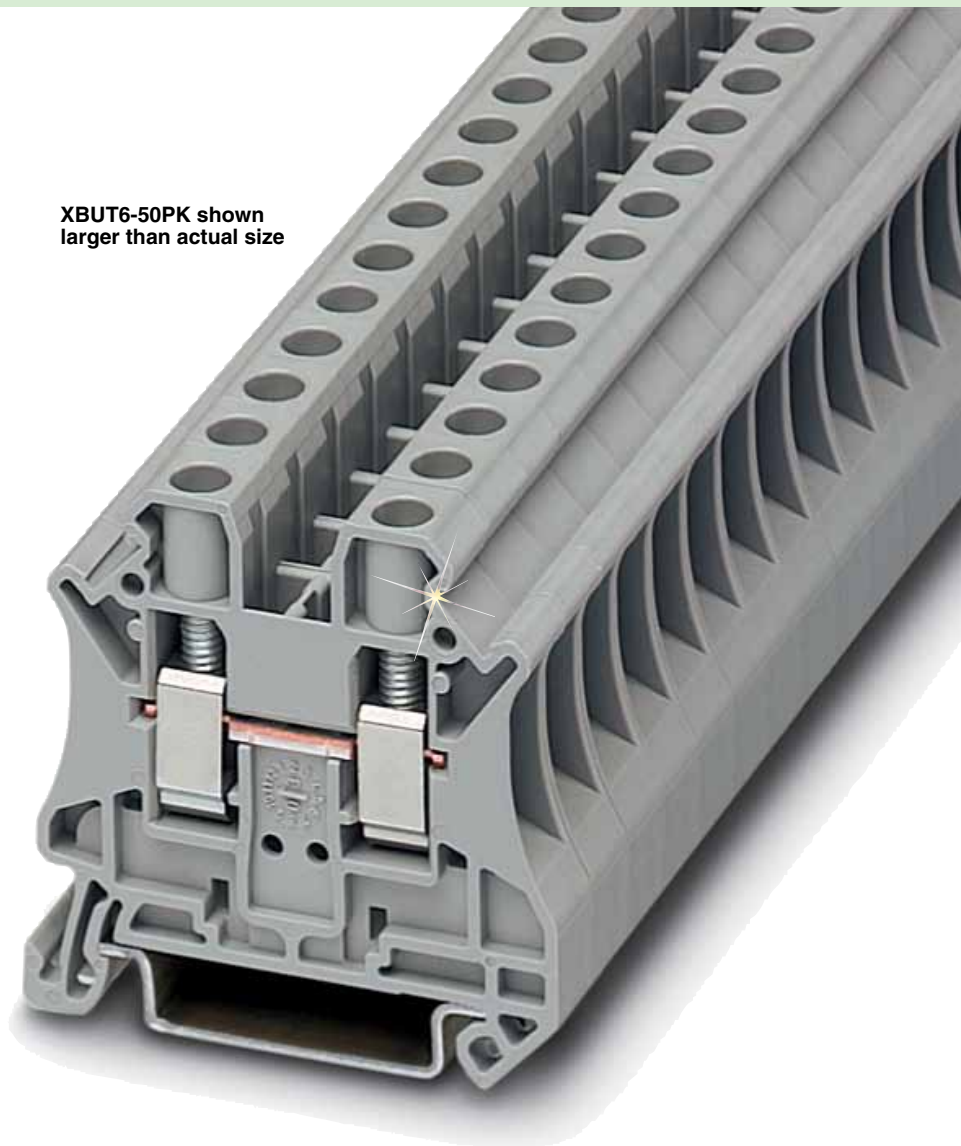
Stripping Length in mm (inch): 10 (0.39)

Thread: M4

Torque in in-lb (Nm): 13.3 to 15.9

(1.5 to 1.8)

XBUT6-50PK shown
larger than actual size



To Order *Visit omega.com/xbut for Pricing and Details*

MODEL NO.	DESCRIPTION
XBUT6-50PK	Gray single level connection, package of 50
XBUT6BU-50PK	Blue single level connection, package of 50
ACCESSORIES	
XBACUT10-10PK	Gray end cover, package of 10
XBATUT10-10PK	Gray partition plate, package of 10
XBAFBS28-10PK	Red 2 position plug-in bridge, package of 10
XBATSPA14-10PK	Test adaptor, package of 10
XBMZB8-10PK	8.22 mm white blank marker strip, package of 10
XBANS3575P	DIN rail 35 x 7.5 mm x 2 m (1.4 x 0.30" x 6.6') slotted
XBANS3575U	DIN rail 35 x 7.5 mm x 2 m (1.4 x 0.30" x 6.6') solid
XBANS3515P	DIN rail 35 x 15 mm x 2 m (1.4 x 0.60" x 6.6') slotted
XBANS3515U	DIN rail 35 x 15 mm x 2 m (1.4 x 0.60" x 6.6') solid
XBAES35C-50PK	1-screw mounted end stop, package of 50
XBAES35T-50PK	3-screw mounted end stop, package of 50
XBAES35N-50PK	Snap-on end stop, package of 50

Note 1: EU type-examination certificate number KEMA 05ATEX2158U.

Ordering Example: **XBUT6-50PK**, gray terminal blocks, **XBANS3575P**, DIN rail.

SPECIFICATIONS FOR XBUT10

Terminal Width: 10.2 mm

Maximum Wire Size: 6 AWG/10 mm²

IEC 60 947-7-1 in V/ A/AWG: 1000/76/20-6

EN 50 019¹ in V/A/AWG: 750/54 or 69/20-6

UL-cUL Ratings in V/A/AWG: 600/65/20-6

TECHNICAL DATA DIMENSIONS

Width/Length/Cover Width in mm (inch):

10.2 (0.40)/46.9 (1.85)/2.2 (0.09)

Height for 35 x 7.5 / 35 x 15 in mm (inch):

47.5 (1.87)/55.0 (2.17)

TECHNICAL DATA IN ACCORDANCE WITH IEC

Maximum Load Current in A/

Cross-Section in mm²: 76/16

Rated Surge Voltage in kV/

Contamination Class: 8/3

Surge Voltage Category/Insulating

Material Group: III/I

CONNECTION CAPACITY

Stranded with Ferrule/with Ferrule and Plastic Sleeve in mm²: 0.5 to 10/0.5 to 10

MULTI-CONDUCTOR CONNECTION (SAME CROSS-SECTION)

Solid/Stranded in mm²: 0.5 to 4/0.5 to 4

Stranded with Ferrules without Plastic Sleeve in mm²: 0.5 to 2.5

Stranded with Twin Ferrule with Plastic Sleeve in mm²: 0.5 to 6

Stripping Length in mm (inch): 10 (0.39)

Thread: M4

Torque in in-lb (Nm): 13.3 to 15.9 (1.5 to 1.8)

XBUT10-50PK
package of 50



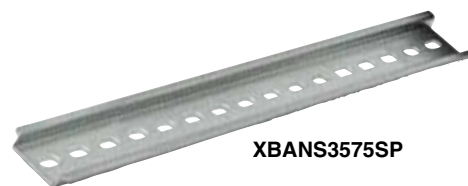
XBES35C-10PK
package of 10



XBATUT10-10PK
package of 10



XBACUT10-10PK
package of 10



XBANS3575SP

To Order Visit omega.com/xbut for Pricing and Details

MODEL NO.	DESCRIPTION
XBUT10-50PK	Gray single level connection, package of 50
XBUT10BU-50PK	Blue single level connection, package of 50
XBUT10OR-50PK	Orange single level connection, package of 50
XBUT10RD-50PK	Red single level connection, package of 50
XBUT10YE-50PK	Yellow single level connection, package of 50
ACCESSORIES	
XBACUT10-10PK	Gray end cover, package of 10
XBATUT10-10PK	Gray partition plate, package of 10
XBAFBS210-10PK	Red 2 position plug-in bridge, package of 10
XBARBUT10-10PK	Red reducing bridge, package of 10
XBMZB10-10PK	10.2 mm white blank marker strip, package of 10
XBANS3575P	DIN rail 35 x 7.5 mm x 2 m (1.4 x 0.30" x 6.6') slotted
XBANS3575U	DIN rail 35 x 7.5 mm x 2 m (1.4 x 0.30" x 6.6') solid
XBANS3515P	DIN rail 35 x 15 mm x 2 m (1.4 x 0.60" x 6.6') slotted
XBANS3515U	DIN rail 35 x 15 mm x 2 m (1.4 x 0.60" x 6.6') solid
XBAES35C-50PK	1-screw mounted end stop, package of 50
XBAES35T-50PK	3-screw mounted end stop, package of 50
XBAES35N-50PK	Snap-on end stop, package of 50

Note 1: EU type-examination certificate number KEMA 05ATEX2158U.

Ordering Example: XBUT10YE-50PK, yellow terminal blocks.

SPECIFICATIONS FOR XBUT16

Terminal Width: 12 mm

Maximum Wire Size: 4 AWG/16 mm²

IEC 60 947-7-1 in V/A/AWG:

1000/101/17-4

UL-cUL Ratings in V/A/AWG:

600/85/16-4

TECHNICAL DATA DIMENSIONS

Width/Length/Cover Width in mm

(inch): 12 (0.47)/52.8 (2.08)/2.2 (0.09)

Height for 35 x 7.5/35 x 15 in mm

(inch): 54.8 (2.16)/62.3 (2.45)

TECHNICAL DATA IN

ACCORDANCE WITH IEC

Maximum Load Current in A/

Cross-Section in mm²: 101/25

Rated Surge Voltage in kV/

Contamination Class: 8/3

Surge Voltage Category/Insulating

Material Group: III/I

Connection Capacity

Stranded with Ferrule/with Ferrule

and Plastic Sleeve in mm²:

1.0 to 16/1.0 to 16

MULTI-CONDUCTOR CONNECTION

(SAME CROSS-SECTION)

Solid/Stranded in mm²:

1.0 to 6/1.0 to 4

Stranded with Ferrules without Plastic

Sleeve in mm²: 1.0 to 4

Stranded with Twin Ferrule with

Plastic Sleeve in mm²: 0.75 to 10

Stripping Length in mm (inch):

10 (0.39)

Thread: M5

Torque in in-lb (Nm): 22.1 to 26.6

(2.5 to 3.0)

XBUT16-10PK
shown larger
than actual size.

XBANS3575P shown
smaller than actual size.

To Order Visit omega.com/xbut for Pricing and Details

MODEL NO.	DESCRIPTION
XBUT16-10PK	Gray single level connection, package of 10
ACCESSORIES	
XBACUT16-10PK	Gray end cover, package of 10
XBAFBS212-10PK	Plug-in bridge, package of 10
XBMZB12-10PK	8.22 mm white blank marker strip, package of 10
XBANS3575P	DIN rail 35 x 7.5 mm x 2 m (1.4 x 0.30" x 6.6') slotted
XBANS3575U	DIN rail 35 x 7.5 mm x 2 m (1.4 x 0.30" x 6.6') solid
XBANS3515P	DIN rail 35 x 15 mm x 2 m (1.4 x 0.60" x 6.6') slotted
XBANS3515U	DIN rail 35 x 15 mm x 2 m (1.4 x 0.60" x 6.6') solid
XBAES35C-50PK	1-screw mounted end stop, package of 50
XBAES35T-50PK	3-screw mounted end stop, package of 50
XBAES35N-50PK	Snap-on end stop, package of 50

Ordering Example: XBUT16-10PK, gray terminal blocks, XBANS3575P, DIN rail.

SPECIFICATIONS FOR XBUT35

Terminal Width: 16 mm

Maximum Wire Size: 0 AWG/35 mm²

IEC 60 947-7-1 in V/A/AWG:

1000/150/15-0

UL-cUL Ratings in V/A/AWG:

600/150/14-1/0

TECHNICAL DATA DIMENSIONS

Width/Length/Cover Width in mm

(inch): 16.0 (0.63)/60.2 (2.37)/-

Height for 35 x 7.5/35 x 15 in mm

(inch): 65.7 (2.59)/73.2 (2.88)

TECHNICAL DATA IN ACCORDANCE WITH IEC

Maximum Load Current in A/

Cross-Section in mm²: 150/50

Rated Surge Voltage in kV/

Contamination Class: 8/3

Surge Voltage Category/Insulating

Material Group: III/I

CONNECTION CAPACITY

Stranded with Ferrule/with Ferrule

and Plastic Sleeve in mm²:

1.5 to 35/1.5 to 35

MULTI-CONDUCTOR CONNECTION (SAME CROSS-SECTION)

Solid/Stranded in mm²:

1.5 to 16/1.5 to 10

Stranded with Ferrules without Plastic

Sleeve in mm²: 1.5 to 10

Stranded with Twin Ferrule with

Plastic Sleeve in mm²: 1.5 to 10

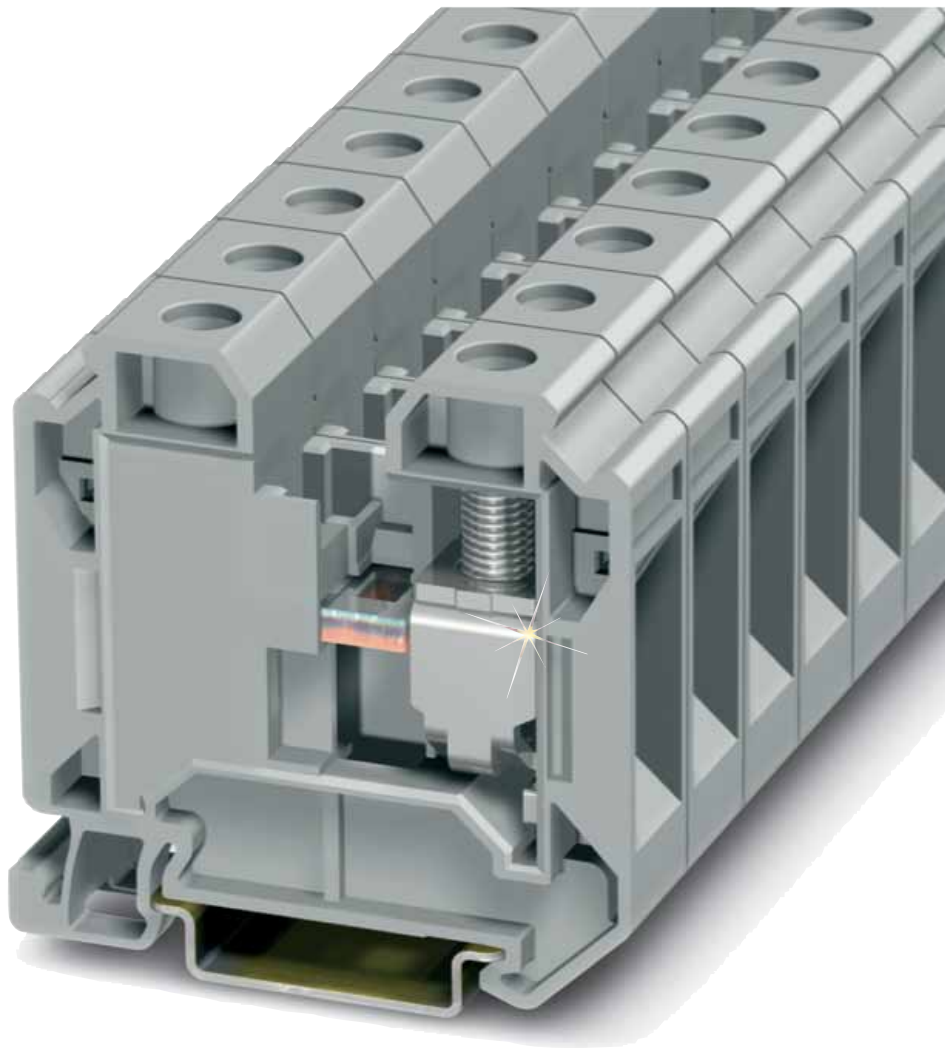
Stripping Length in mm (inch):

16 (0.63)

Thread: M6

Torque in in-lb (Nm): 28.3 to 32.7

(3.2 to 3.7)



**XBUT35-10PK shown
larger than actual size**

To Order *Visit omega.com/xbut for Pricing and Details*

MODEL NO.	DESCRIPTION
XBUT35-10PK	Gray single level connection, package of 10
ACCESSORIES	
XBAFBS216-10PK	Red 2 position plug-in bridge, package of 10
XBMZB15-10PK	8.22 mm white blank marker strip, package of 10
XBANS3575P	DIN rail 35 x 7.5 mm x 2 m (1.4 x 0.30" x 6.6') slotted
XBANS3575U	DIN rail 35 x 7.5 mm x 2 m (1.4 x 0.30" x 6.6') solid
XBANS3515P	DIN rail 35 x 15 mm x 2 m (1.4 x 0.60" x 6.6') slotted
XBANS3515U	DIN rail 35 x 15 mm x 2 m (1.4 x 0.60" x 6.6') solid
XBAES35C-50PK	1-screw mounted end stop, package of 50
XBAES35T-50PK	3-screw mounted end stop, package of 50
XBAES35N-50PK	Snap-on end stop, package of 50

Ordering Example: **XBUT35-10PK**, gray terminal blocks, **XBANS3575P**, DIN rail.

omega.co.uk®

Your One-Stop Source for Process Measurement and Control!

Freephone 0800 488 488 | International +44(0) 161 777 6622 | Fax +44(0) 161 777 6622 | Sales@omega.co.uk

www.omega.co.uk



UNITED STATES

www.omega.com

1-800-TC-OMEGA
Stamford, CT.

CANADA

www.omega.ca

Laval(Quebec)
1-800-TC-OMEGA

GERMANY

www.omega.de

Deckenpfronn, Germany
0800-8266342

UNITED KINGDOM

www.omega.co.uk

Manchester, England
0800-488-488
+44-(0)161-777-6611

FRANCE

www.omega.fr

0800-466-342

BENELUX

www.omega.nl

0800-099-33-44



More than 100,000 Products Available!

• Temperature

Calibrators, Connectors, General Test and Measurement Instruments, Handheld Instruments for Temperature Measurement, Ice Point References, Indicating Labels, Crayons, Cements and Lacquers, Infrared Temperature Measurement Instruments, Recorders, Relative Humidity Measurement Instruments, PT100 Probes, PT100 Elements, Temperature & Process Meters, Timers and Counters, Temperature and Process Controllers and Power Switching Devices, Thermistor Elements, Probes and Assemblies, Thermocouples, Thermowells and Head and Well Assemblies, Transmitters, Thermocouple Wire, RTD Probes

• Flow and Level

Air Velocity Indicators, Doppler Flowmeters, Level Measurement, Magnetic Flowmeters, Mass Flowmeters, Pitot Tubes, Pumps, Rotameters, Turbine and Paddle Wheel Flowmeters, Ultrasonic Flowmeters, Valves, Variable Area Flowmeters, Vortex Shedding Flowmeters

• pH and Conductivity

Conductivity Instrumentation, Dissolved Oxygen Instrumentation, Environmental Instrumentation, pH Electrodes and Instruments, Water and Soil Analysis Instrumentation

• Data Acquisition

Communication Products and Converters, Data Acquisition and Analysis Software, Data Loggers, Plug-in Cards, Signal Conditioners, USB, RS232, RS485, Ethernet and Parallel Port Data Acquisition Systems, Wireless Transmitters and Receivers

• Pressure, Strain and Force

Displacement Transducers, Dynamic Measurement Force Sensors, Instrumentation for Pressure and Strain Measurements, Load Cells, Pressure Gauges, Pressure Reference Section, Pressure Switches, Pressure Transducers, Proximity Transducers, Regulators, Pressure Transmitters, Strain Gauges, Torque Transducers, Valves

• Heaters

Band Heaters, Cartridge Heaters, Circulation Heaters, Comfort Heaters, Controllers, Meters and Switching Devices, Flexible Heaters, General Test and Measurement Instruments, Heater Hook-up Wire, Heating Cable Systems, Immersion Heaters, Process Air and Duct, Heaters, Radiant Heaters, Strip Heaters, Tubular Heaters