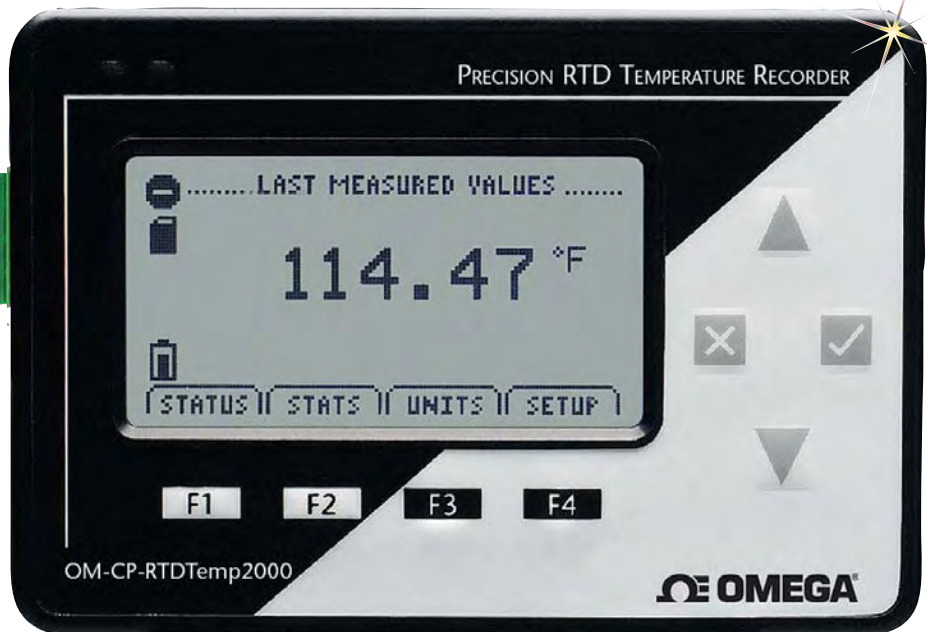


Precision RTD Temperature Data Logger Part of the NOMAD® Family

OM-CP-RTDTEMP2000

Starts at
\$499



OM-CP-RTDTEMP2000 data logger, \$499, shown actual size.

- ✓ Large, Backlit LCD Display
- ✓ Front Keypad with Lock Feature
- ✓ High Speed Download
- ✓ Real-Time Operation
- ✓ User-Selectable Measurement Units
- ✓ NIST Traceable Calibration
- ✓ Min/Max and Average Statistics
- ✓ Programmable Start/Stop Time
- ✓ Convenient Status Indicators
- ✓ User Replaceable Battery and External Power
- ✓ Wall Mountable

The OM-CP-RTDTEMP2000 is a battery powered precision RTD temperature recorder, with a LCD display. It is perfect for applications requiring precise temperature readings.

The 8-button keypad and large LCD provide convenient access to current data and recorder setup. Additionally, memory and battery levels, external power status, and sampling and recording status are shown on the LCD.

Available on-screen data includes: statistics (min, max, average); recording status (start, stop and recording rate); display options (units, text size); and calibration information (date calibrated, date for recalibration). Statistics can be cleared at any time during logging.

With 174,762 readings, the OM-CP-RTDTEMP2000 has one of the largest memory capacities of any similar data recorder on the market. The non-volatile memory will retain recorded data, even if AC and battery power are lost.

The OM-CP-RTDTEMP2000 runs on a 9 V battery with a typical battery life of 1 year at a 1 min reading rate with the display off. With continuous LCD and no backlight usage, the average battery life is 30 days. For power savings, both the LCD and backlight have configurable auto-off options.

Those wanting to keep the LCD display and backlight continuously active need only to connect the unit to an AC power supply, keeping the 9 V battery connected as a back-up.

NIST traceable calibration is available for users needing to meet regulatory requirements. Creating permanent records, performing data calculations, and the graphing of data is quick and easy: Simply connect the interface cable to an available USB or serial port and with a few clicks of the mouse, data is downloaded and ready for review or export to Excel.

Specifications

TEMPERATURE PROBE

Measurement Range:

-200 to 850°C (-328 to 1562°F)

Input Type: 100 Ω Pt RTD,
α = 0.00385

Input Connection: 2, 3,
or 4-wire scrow terminal block

Resolution: 0.01°C

Probe Calibrated Accuracy:

±0.05°C (-200 to 260°C)

±0.3°C (260 to 850°C)

Specified Accuracy Range:

-200 to 850°C (-328 to 1562°F)

DOT-MATRIX LCD

Dimensions: 63 x 35 mm

(2.5 x 1.375")

Text: Configurable channel
text size

Indicators: Power, status,
memory

Backlight: Configurable w/auto
shut-off and contrast adjustment

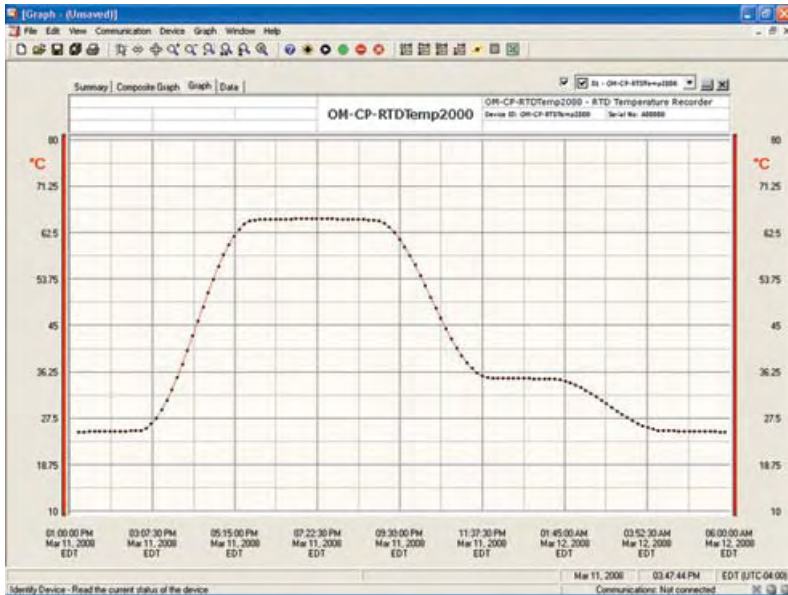
Start/Stop Time: Software
programmable start time and
date, up to six months in
advance; programmable
stop time

Memory: 174,762 total
readings; software configurable
memory wrap

Reading Rate: 1 reading every
2 seconds to 1 every 24 hours

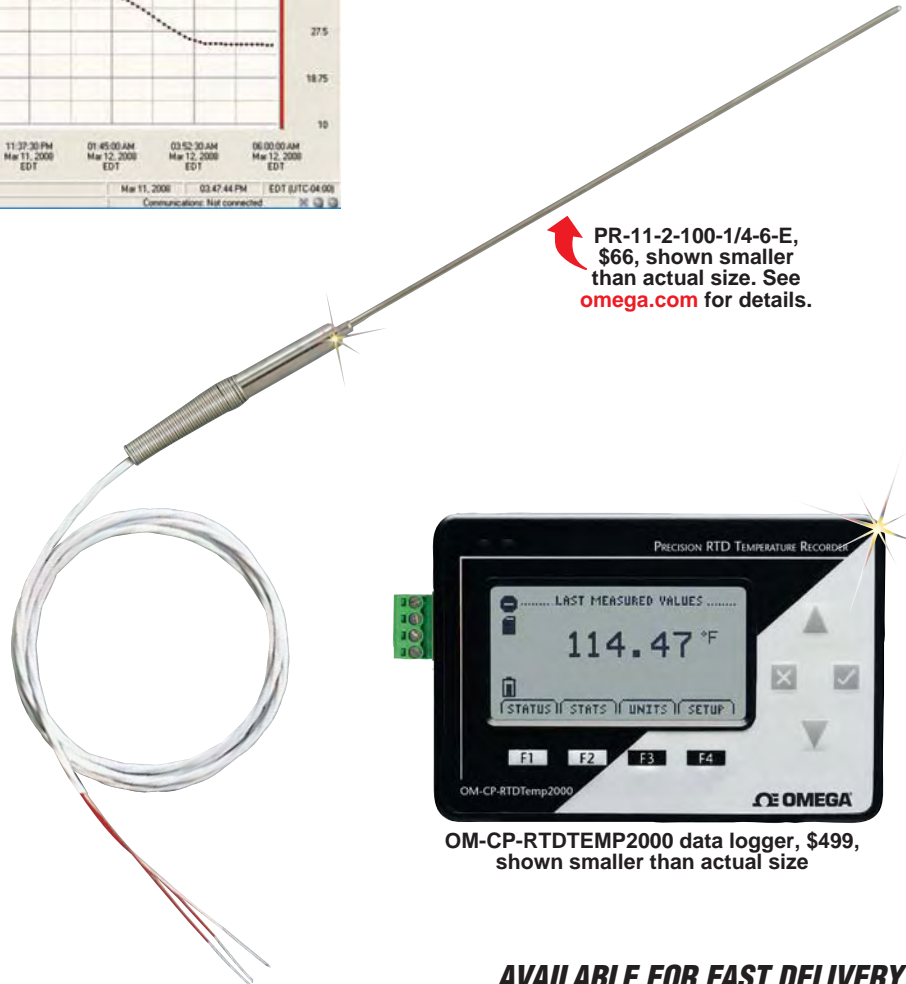
Calibration: Digital calibration
through software

DATA LOGGERS



OM-CP-IFC110, \$99, Windows® software displays data in graphical or tabular format.

Calibration Date: Automatically recorded within device
Battery Type: 9 V lithium battery (included), user replaceable; optional AC adaptor
Battery Life: 1 year battery life at 1 min reading rate with display off. 30 days typical with continuous LCD and no backlight usage.
Data Format: Date and time stamped °C, °F, K, °R
Time Accuracy: ±1 minute/month (at 20 to 30°C)
Computer Interface: PC serial or USB (interface cable required); 115,200 baud
Software: WIN98/NT/2000/XP/VISTA 32-bit (VISTA 32-bit version only; VISTA 64-bit is not supported)
Operating Environment: -20 to 60°C (-4 to 140°F)
 0 to 95% RH non-condensing
Dimensions: 122 x 84 x 32 mm (4.8 x 3.3 x 1.25")
Weight: 440 g (16 oz)
Enclosure: Black anodized aluminum



PR-11-2-100-1/4-6-E, \$66, shown smaller than actual size. See omega.com for details.

OM-CP-RTDTEMP2000 data logger, \$499, shown smaller than actual size

AVAILABLE FOR FAST DELIVERY!

To Order (Specify Model Number)

Model No.	Price	Description
OM-CP-RTDTEMP2000	\$499	Precision temperature data logger
OM-CP-RTDTEMP2000-CERT	559	Precision temperature data logger with NIST calibration certificate
OM-CP-IFC110	99	Windows software and 1.2 m (4') RS-232 cable with DB9F termination
OM-CP-IFC200	119	Windows software and 3.7 m (12') USB interface cable
OM-CP-BAT103	20	Replacement 9 V lithium battery
OM-CP-110-PWR-2000	13	110 Vac power adaptor
OM-CP-220-PWR-2000	13	220 Vac power adaptor

Comes with operator's manual and 9V lithium battery.
Ordering Example: OM-CP-RTDTEMP2000-CERT, precision temperature data logger with NIST calibration certificate and OM-CP-IFC110, Windows software and RS-232 cable with DB9F termination, \$559 + 99 = \$658.

omega.co.uk[®]

Your One-Stop Source for Process Measurement and Control!

Freephone 0800 488 488 | International +44(0) 161 777 6622 | Fax +44(0) 161 777 6622 | Sales@omega.co.uk

www.omega.co.uk



UNITED STATES

www.omega.com

1-800-TC-OMEGA
Stamford, CT.

UNITED KINGDOM

www.omega.co.uk

Manchester, England
0800-488-488
+44-(0)161-777-6611

CANADA

www.omega.ca

Laval(Quebec)
1-800-TC-OMEGA

FRANCE

www.omega.fr

0800-466-342

GERMANY

www.omega.de

Deckenfronn, Germany
0800-8266342

BENELUX

www.omega.nl

0800-099-33-44



More than 100,000 Products Available!

• Temperature

Calibrators, Connectors, General Test and Measurement Instruments, Handheld Instruments for Temperature Measurement, Ice Point References, Indicating Labels, Crayons, Cements and Lacquers, Infrared Temperature Measurement Instruments, Recorders, Relative Humidity Measurement Instruments, PT100 Probes, PT100 Elements, Temperature & Process Meters, Timers and Counters, Temperature and Process Controllers and Power Switching Devices, Thermistor Elements, Probes and Assemblies, Thermocouples, Thermowells and Head and Well Assemblies, Transmitters, Thermocouple Wire, RTD Probes

• Flow and Level

Air Velocity Indicators, Doppler Flowmeters, Level Measurement, Magnetic Flowmeters, Mass Flowmeters, Pitot Tubes, Pumps, Rotameters, Turbine and Paddle Wheel Flowmeters, Ultrasonic Flowmeters, Valves, Variable Area Flowmeters, Vortex Shedding Flowmeters

• pH and Conductivity

Conductivity Instrumentation, Dissolved Oxygen Instrumentation, Environmental Instrumentation, pH Electrodes and Instruments, Water and Soil Analysis Instrumentation

• Data Acquisition

Communication Products and Converters, Data Acquisition and Analysis Software, Data Loggers Plug-in Cards, Signal Conditioners, USB, RS232, RS485, Ethernet and Parallel Port Data Acquisition Systems, Wireless Transmitters and Receivers

• Pressure, Strain and Force

Displacement Transducers, Dynamic Measurement Force Sensors, Instrumentation for Pressure and Strain Measurements, Load Cells, Pressure Gauges, Pressure Reference Section, Pressure Switches, Pressure Transducers, Proximity Transducers, Regulators, Pressure Transmitters, Strain Gauges, Torque Transducers, Valves

• Heaters

Band Heaters, Cartridge Heaters, Circulation Heaters, Comfort Heaters, Controllers, Meters and Switching Devices, Flexible Heaters, General Test and Measurement Instruments, Heater Hook-up Wire, Heating Cable Systems, Immersion Heaters, Process Air and Duct, Heaters, Radiant Heaters, Strip Heaters, Tubular Heaters