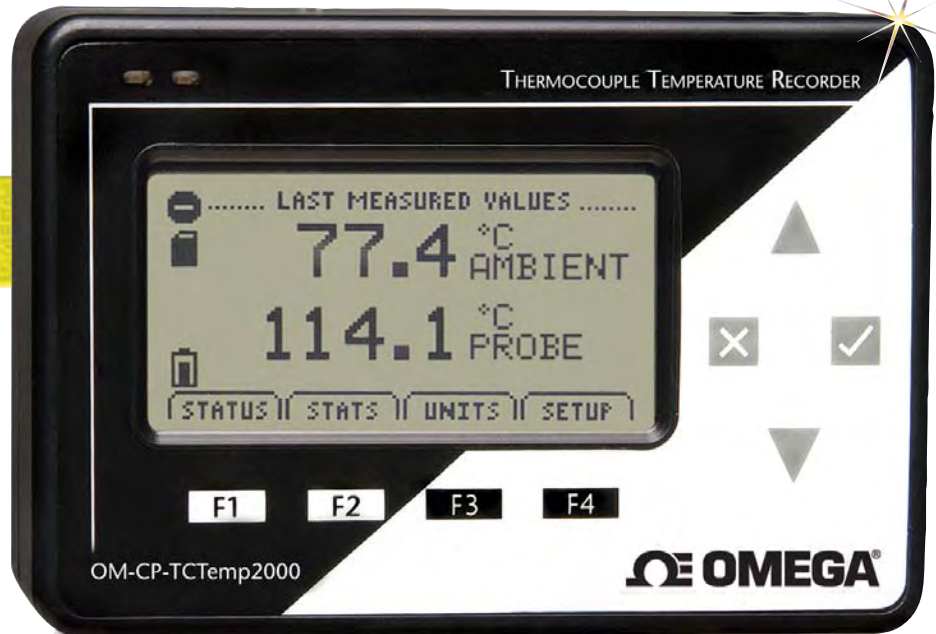


Thermocouple Temperature Data Logger with LCD Display Part of the NOMAD® Family

OM-CP-TCTEMP2000
Starts at

\$499



OM-CP-TCTEMP2000, \$499, data logger shown actual size

- ✓ Large, Backlit LCD Display
- ✓ Accepts Thermocouple Types J, K, T, E, R, S, B, N
- ✓ Front Keypad with Lock Feature
- ✓ High Speed Download
- ✓ Real-Time Operation
- ✓ Min/Max and Average Statistics
- ✓ Programmable Start/Stop Time
- ✓ NIST Traceable Calibration
- ✓ User-Selectable Measurement Units
- ✓ User Replaceable Battery and External Power
- ✓ Wall Mountable

The OM-CP-TCTEMP2000 is a battery powered thermocouple temperature data logger with an LCD display. This data logger has an internal temperature sensor and one external input for J, K, T, E, R, S, B, and N type thermocouples.

The 8-button keypad and large LCD provide convenient access to current data and recorder setup. Additionally, memory and battery levels, external power status, and sampling and recording status are shown on the LCD.

Available on-screen data includes: statistics (min, max, average); recording status (start, stop and recording rate); display options (units, text size); and calibration information (date calibrated, date for recalibration). Statistics can be cleared at any time during logging.

With 131,071 readings, the OM-CP-TCTEMP2000 has one of the largest memory capacities of any similar data recorder on the market. The non-volatile memory will retain recorded data, even if AC and battery power are lost.

The OM-CP-TCTEMP2000 runs on a 9 V battery with a typical battery life of 1 year at a 1 min reading rate with the display off. With continuous LCD and no backlight usage, the average battery life is 30 days. For power savings, both the LCD and backlight have configurable auto-off options.

Those wanting to keep the LCD display and backlight continuously active need only to connect the unit to an AC power supply, keeping the 9 V battery connected as a back-up.

NIST traceable calibration is available for users needing to meet regulatory requirements. Creating permanent records, performing data calculations, and the graphing of data is quick and easy: Simply connect the interface cable to an available USB or serial port and, with a few clicks of the mouse, data is downloaded and ready for review or export to Excel.

Specifications

INTERNAL CHANNEL

Temperature Range:

-20 to 60°C (-4 to 140°F)

Temperature Resolution: 0.1°C

Calibrated Accuracy: ±0.5°C (0 to 50°C)

THERMOCOUPLE CHANNEL

Thermocouple Types:

J, K, T, E, R, S, B, N
Thermocouple Connection: Female subminiature (SMP)

Cold Junction Compensation:

Automatic, based on internal channel

Maximum Thermocouple

Resistance: 1000Ω, <100Ω recommended

DOT-MATRIX LCD

Dimensions:

63 x 35 mm (2.5 x 1.375")

Text: Configurable channel text size

Indicators: Power, status, memory

Backlight: Configurable w/auto shut-off and contrast adjustment

Start/Stop Time: Software programmable start time and date, up to six months in advance; programmable stop time

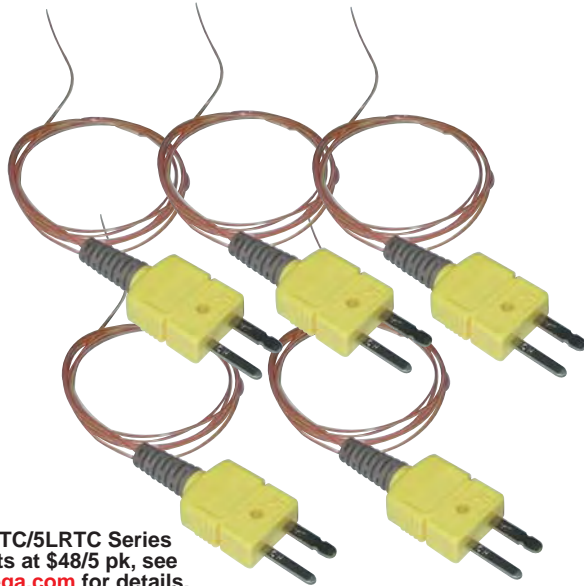
Memory: 131,071 readings per channel; 262,143 total readings; software configurable memory wrap

Reading Rate: 1 reading every 2 seconds to 1 every 24 hours

DATA LOGGERS

| Thermocouple Type | Range | Resolution | Accuracy* |
|-------------------|----------------|------------|-----------|
| J | -210 to 760°C | 0.1°C | ±0.5°C |
| K | -270 to 1370°C | 0.1°C | ±0.5°C |
| T | -270 to 400°C | 0.1°C | ±0.5°C |
| E | -270 to 980°C | 0.1°C | ±0.5°C |
| R | -50 to 1760°C | 0.5°C | ±2.0°C |
| S | -50 to 1760°C | 0.5°C | ±2.0°C |
| B | 50 to 1820°C | 0.5°C | ±2.0°C |
| N | -270 to 1300°C | 0.1°C | ±0.5°C |

* Accuracy does not include errors due to thermocouple.



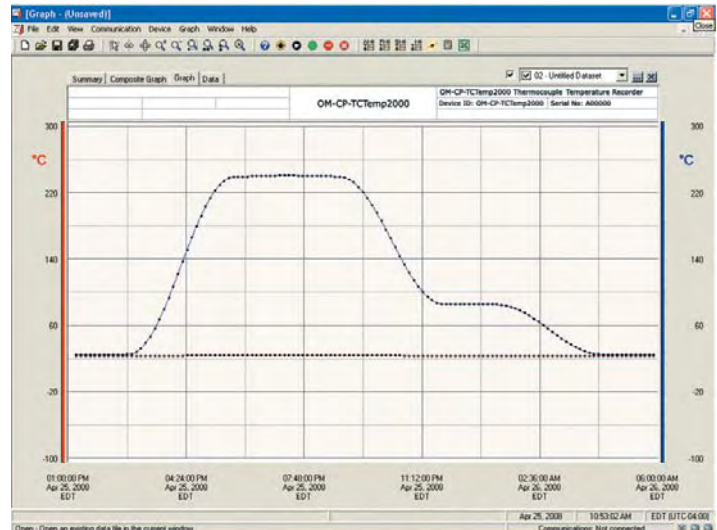
5SRTC/5LRTC Series starts at \$48/5 pk, see omega.com for details.

Calibration: Digital calibration through software
Calibration Date: Automatically recorded within device
Battery Type: 9 V lithium battery (included), user replaceable; optional AC adaptor
Battery Life: 1 year battery life at 1 min reading rate with display off. 30 days typical with continuous LCD and no backlight usage
Data Format: Date and time stamped °C, °F, K, °R
Time Accuracy: ±1 minute/month (at 20 to 30°C)
Computer Interface: PC serial or USB (interface cable required); 115,200 baud
Software: WIN98/NT/2000/XP/VISTA 32-bit (VISTA 32-bit version only; VISTA 64-bit is not supported)
Operating Environment: -20 to 60°C (-4 to 140°F), 0 to 95%RH non-condensing
Dimensions: 122 x 84 x 32 mm (4.8 x 3.3 x 1.25")
Weight: 440 g (16 oz)
Enclosure: Black anodized aluminum

OM-CP-IFC110, \$99, Windows® software displays data in graphical or tabular format



OM-CP-TCTEMP2000, \$499, data logger shown smaller than actual size



AVAILABLE FOR FAST DELIVERY!

| To Order (Specify Model Number) | | |
|---------------------------------|-------|--|
| Model No. | Price | Description |
| OM-CP-TCTEMP2000 | \$499 | Thermocouple temperature data logger with LCD display |
| OM-CP-TCTEMP2000-CERT | 559 | Thermocouple temperature data logger with LCD display and NIST calibration certificate |
| OM-CP-IFC110 | 99 | Windows software and 1.2 m (4') RS-232 cable with DB9F termination |
| OM-CP-IFC200 | 119 | Windows software and 3.7 m (12') USB interface cable |
| OM-CP-BAT103 | 20 | Replacement 9 V lithium battery |
| OM-CP-110-PWR-2000 | 13 | 110 Vac power adaptor |
| OM-CP-220-PWR-2000 | 13 | 220 Vac power adaptor |

Comes with operator's manual and 9V lithium battery.
Ordering Example: OM-CP-TCTEMP2000-CERT, thermocouple temperature data logger with LCD display and NIST calibration certificate and OM-CP-IFC110, Windows software and RS-232 cable with DB9F termination, \$559 + 99 = \$658.

omega.co.uk[®]

Your One-Stop Source for Process Measurement and Control!

Freephone 0800 488 488 | International +44(0) 161 777 6622 | Fax +44(0) 161 777 6622 | Sales@omega.co.uk

www.omega.co.uk



UNITED STATES

www.omega.com

1-800-TC-OMEGA
Stamford, CT.

UNITED KINGDOM

www.omega.co.uk

Manchester, England
0800-488-488
+44-(0)161-777-6611

CANADA

www.omega.ca

Laval(Quebec)
1-800-TC-OMEGA

FRANCE

www.omega.fr

0800-466-342

GERMANY

www.omega.de

Deckenfronn, Germany
0800-8266342

BENELUX

www.omega.nl

0800-099-33-44



More than 100,000 Products Available!

• Temperature

Calibrators, Connectors, General Test and Measurement Instruments, Handheld Instruments for Temperature Measurement, Ice Point References, Indicating Labels, Crayons, Cements and Lacquers, Infrared Temperature Measurement Instruments, Recorders, Relative Humidity Measurement Instruments, PT100 Probes, PT100 Elements, Temperature & Process Meters, Timers and Counters, Temperature and Process Controllers and Power Switching Devices, Thermistor Elements, Probes and Assemblies, Thermocouples, Thermowells and Head and Well Assemblies, Transmitters, Thermocouple Wire, RTD Probes

• Flow and Level

Air Velocity Indicators, Doppler Flowmeters, Level Measurement, Magnetic Flowmeters, Mass Flowmeters, Pitot Tubes, Pumps, Rotameters, Turbine and Paddle Wheel Flowmeters, Ultrasonic Flowmeters, Valves, Variable Area Flowmeters, Vortex Shedding Flowmeters

• pH and Conductivity

Conductivity Instrumentation, Dissolved Oxygen Instrumentation, Environmental Instrumentation, pH Electrodes and Instruments, Water and Soil Analysis Instrumentation

• Data Acquisition

Communication Products and Converters, Data Acquisition and Analysis Software, Data Loggers Plug-in Cards, Signal Conditioners, USB, RS232, RS485, Ethernet and Parallel Port Data Acquisition Systems, Wireless Transmitters and Receivers

• Pressure, Strain and Force

Displacement Transducers, Dynamic Measurement Force Sensors, Instrumentation for Pressure and Strain Measurements, Load Cells, Pressure Gauges, Pressure Reference Section, Pressure Switches, Pressure Transducers, Proximity Transducers, Regulators, Pressure Transmitters, Strain Gauges, Torque Transducers, Valves

• Heaters

Band Heaters, Cartridge Heaters, Circulation Heaters, Comfort Heaters, Controllers, Meters and Switching Devices, Flexible Heaters, General Test and Measurement Instruments, Heater Hook-up Wire, Heating Cable Systems, Immersion Heaters, Process Air and Duct, Heaters, Radiant Heaters, Strip Heaters, Tubular Heaters