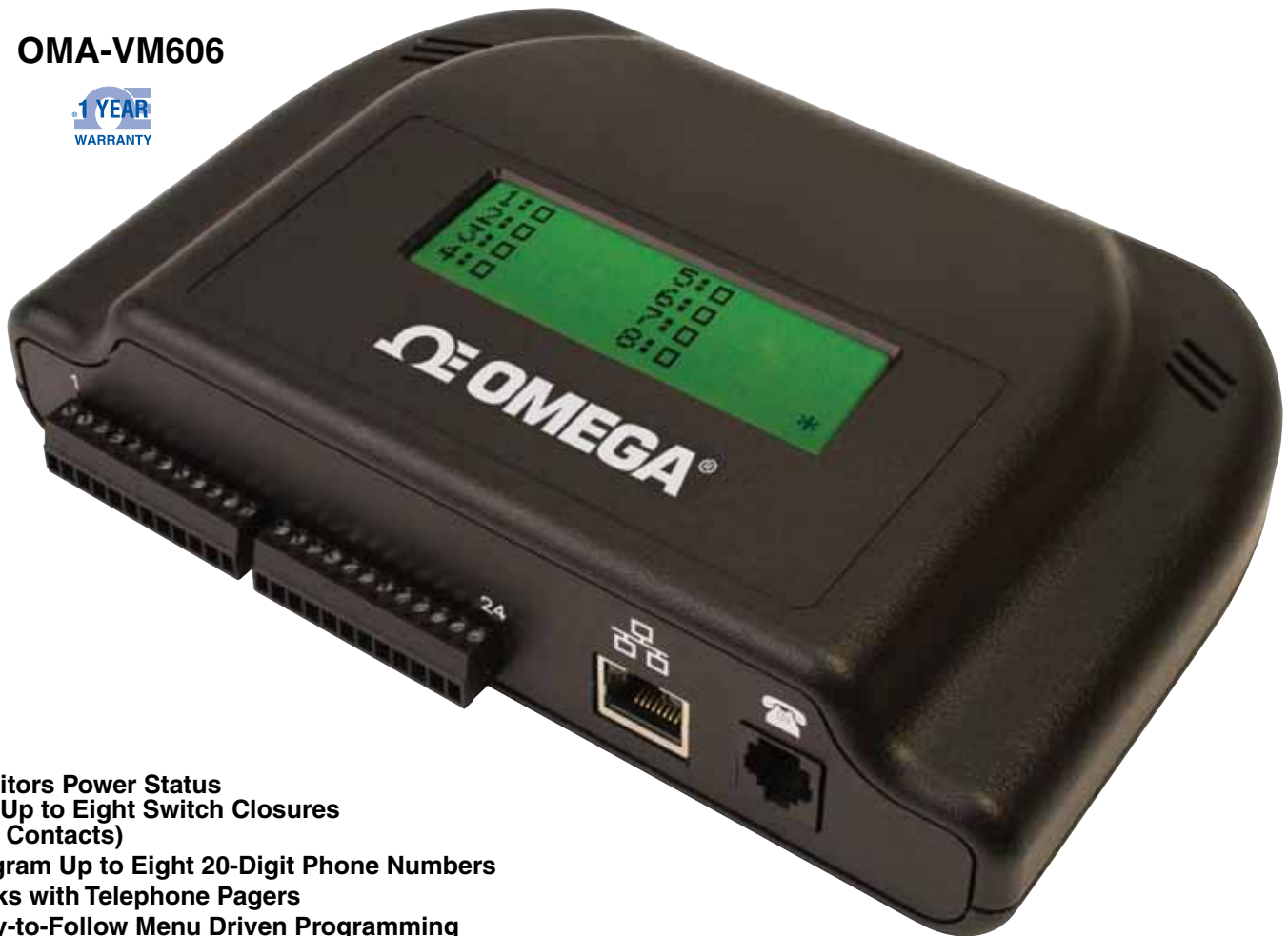


OMEGAPHONE® Eight Channel Alarm Dialers

OMA-VM606



- ✓ Monitors Power Status and Up to Eight Switch Closures (Dry Contacts)
- ✓ Program Up to Eight 20-Digit Phone Numbers
- ✓ Works with Telephone Pagers
- ✓ Easy-to-Follow Menu Driven Programming Done Over the Phone
- ✓ Wall Mount Enclosure
- ✓ 4-Line LCD Display

Model OMA-VM606 monitors up to eight switch closures (dry contacts) which allows you to connect a wide variety of sensors such as magnetic door or window switches, thermostats, fluid level switches and motion sensors. The OMA-VM606 allows you to program a "normal" state and a time delay for each dry contact input. A five-second message can be recorded to define each input. An additional local identification message can be recorded to identify the OMA-VM606 dialer. When an input is different from the programmed "normal" state for longer than the time delay, or the power is out for longer than five minutes (default is 5 minutes however this is user selectable) the unit will dial up to eight phone or pager numbers. If contact has not been made after dialing all phone numbers, the OMA-VM606 will wait 20 minutes and begin calling again. This sequence is repeated until contact is made. The integrated voice tells you which input is in alarm and the current status. You can call the unit at any time to hear a status report including power status. All programming is accomplished over the phone following simple voice instructions.

OMA-VM606E shown smaller than actual size.

When the OMA-VM606 goes into an emergency state it will energize the alarm relay, activate the alarm buzzer and begin making emergency calls. When the unit dials a voice number it will first play the local identification message and the current status of any inputs which caused the emergency state. The unit ceases to be in the emergency state once contact is made with the unit. Contact is made by the user entering a personal identification number (PIN) after receiving a call from the unit, by entering the PIN number when calling in to the unit or by pressing the pushbutton located on the top of the dialer. If the input(s) return to the programmed "normal" states, the unit will also cease to be in the emergency state. If the OMA-VM606 calls an answering machine or voice mail, the warning message will be left and the unit will continue to call. When the OMA-VM606 calls a pager number, it will transmit the local identification number, any inputs which have caused an alarm and the power status.

Ethernet Data Collection with Data Capture Software (OMA-VM606E only)

The optional Ethernet data collection package allows you to remotely check the dialer status. Using the Data Capture Software (this software is available for free from omega.com) you can view real time data, view historical data, automatically send alarm emails or SMS to key personnel that specify the exact location and cause of the problem, maintain secure data files, easily create and print graphs over specified time periods for any data and also program temperature limits remotely.

Specifications

Number of Inputs: 8

Input Type: Dry contact (5 Vdc, 2 mA source)

Telephone: Standard RJ11 phone jack connection

Telephone Numbers: Stores up to eight callout phone numbers up to 20 digits long

Range of Incoming Rings Before Answer: 1 to 20

Number of Digits of Programmable PIN: 4

Range of Time Delay for Each Input Before Callout: 0 to 999 minutes

Maximum Power Outage Alarm Time Delay: 900 minutes (default is 5 minutes)

Local Identification Message (Unit ID): Record up to an 8-second message that identifies the dialer

Individual Channel Identification Messages: Record up to a 5-second identification message for each input

Operation: Operates with answering machine on the same phone line

Alarm Notification: Alarm buzzer sounds and alarm relay closes if any input(s) go into an alert condition

Alarm Cancellation: Pushbutton on top of the unit silences the alarm and cancels emergency telephone calls

Alarm Relay Output: SPDT (1 A, 24 Vdc)

Alarm Relay Operation: User selectable to be automatically energized during an emergency state (turn off from top button) or to be remotely controlled (turn on or off) via touch tone phone

Alarm Buzzer: 90 dB

Display: Integral LCD display

Power: 120 Vac 50/60 Hz from included wall mount transformer power supply

Battery Backup: 24-hour rechargeable battery backup

Operating Ambient: 0 to 52°C (32 to 125°F)

Electrical Connections: Two pluggable 12-position terminal blocks

Dimensions: 127 H x 191 W x 45 mm D (5.0 x 7.5 x 1.75")

Material: ABS plastic

Weight: 1.4 kg (3 lb)

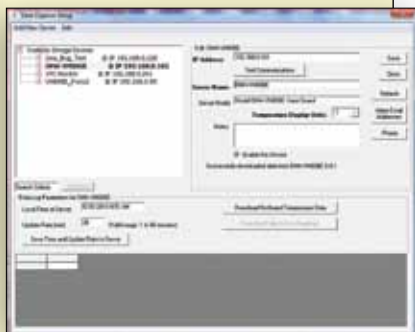
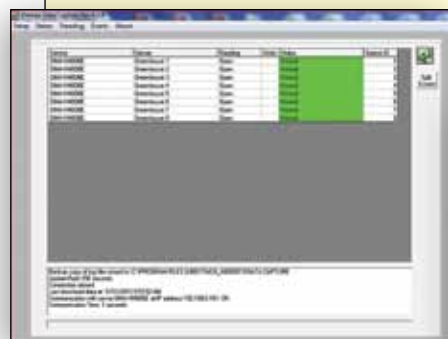
Ethernet Data Collection (OMA-VM606E Only)

LAN: Ethernet 10Base-T or 100Base-TX (auto-sensing)

Transport Protocol: TCP/IP, UDP

Connector: RJ45

LED Indicators: 10Base-T connection, 100Base-TX connection



Bottom view of OMA-VM606E showing ports.



OMEGACARESM extended warranty program is available for models shown on this page. Ask your sales representative for full details when placing an order. OMEGACARESM covers parts, labor and equivalent loaners.

To Order

Model No.	Description
OMA-VM606	Eight channel alarm dialer
OMA-VM606E	Eight channel alarm dialer with ethernet

Comes complete with operator's manual and 120 Vac power adaptor.

Ordering Example: OMA-VM606E, eight channel alarm dialer with ethernet and OCW-1, OMEGACARESM extends standard 1-year warranty to a total of 2 years.

omega.co.uk®

Your One-Stop Source for Process Measurement and Control!

Freephone 0800 488 488 | International +44(0) 161 777 6622 | Fax +44(0) 161 777 6622 | Sales@omega.co.uk

www.omega.co.uk



UNITED STATES

www.omega.com

1-800-TC-OMEGA
Stamford, CT.

CANADA

www.omega.ca

Laval(Quebec)
1-800-TC-OMEGA

GERMANY

www.omega.de

Deckenpfronn, Germany
0800-8266342

UNITED KINGDOM

www.omega.co.uk

Manchester, England
0800-488-488
+44-(0)161-777-6611

FRANCE

www.omega.fr

0800-466-342

BENELUX

www.omega.nl

0800-099-33-44



More than 100,000 Products Available!

• Temperature

Calibrators, Connectors, General Test and Measurement Instruments, Handheld Instruments for Temperature Measurement, Ice Point References, Indicating Labels, Crayons, Cements and Lacquers, Infrared Temperature Measurement Instruments, Recorders, Relative Humidity Measurement Instruments, PT100 Probes, PT100 Elements, Temperature & Process Meters, Timers and Counters, Temperature and Process Controllers and Power Switching Devices, Thermistor Elements, Probes and Assemblies, Thermocouples, Thermowells and Head and Well Assemblies, Transmitters, Thermocouple Wire, RTD Probes

• Flow and Level

Air Velocity Indicators, Doppler Flowmeters, Level Measurement, Magnetic Flowmeters, Mass Flowmeters, Pitot Tubes, Pumps, Rotameters, Turbine and Paddle Wheel Flowmeters, Ultrasonic Flowmeters, Valves, Variable Area Flowmeters, Vortex Shedding Flowmeters

• pH and Conductivity

Conductivity Instrumentation, Dissolved Oxygen Instrumentation, Environmental Instrumentation, pH Electrodes and Instruments, Water and Soil Analysis Instrumentation

• Data Acquisition

Communication Products and Converters, Data Acquisition and Analysis Software, Data Loggers, Plug-in Cards, Signal Conditioners, USB, RS232, RS485, Ethernet and Parallel Port Data Acquisition Systems, Wireless Transmitters and Receivers

• Pressure, Strain and Force

Displacement Transducers, Dynamic Measurement Force Sensors, Instrumentation for Pressure and Strain Measurements, Load Cells, Pressure Gauges, Pressure Reference Section, Pressure Switches, Pressure Transducers, Proximity Transducers, Regulators, Pressure Transmitters, Strain Gauges, Torque Transducers, Valves

• Heaters

Band Heaters, Cartridge Heaters, Circulation Heaters, Comfort Heaters, Controllers, Meters and Switching Devices, Flexible Heaters, General Test and Measurement Instruments, Heater Hook-up Wire, Heating Cable Systems, Immersion Heaters, Process Air and Duct, Heaters, Radiant Heaters, Strip Heaters, Tubular Heaters