

Collect for Windows Data Collection through RS-232

SWD-COLLECT/W

\$295

Basic Unit



SERIAL I/O

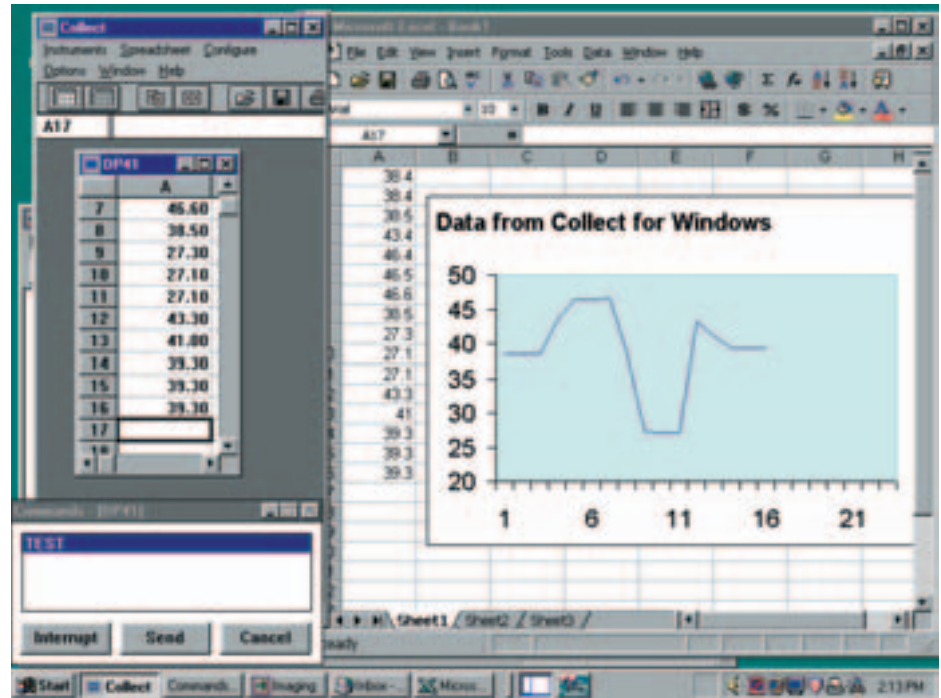


IBM PC

- ✓ Collect Data from any RS-232 Device
- ✓ Eliminate Manual Data Entry
- ✓ Transfer Data into any Windows Program in Real-Time
- ✓ Date and Time Stamping
- ✓ No Programming Required

Collect for Windows allows you to collect data from virtually any RS-232 instrument, and put that directly into programs such as Excel, Lotus 1-2-3, Quattro Pro and many more. Multiple applications may be open and receiving data simultaneously from different instruments. As data is received in your application, calculations can be performed instantly and the results displayed. Collect for Windows can be combined with other Windows programs to provide real-time charting and plotting capabilities. It will also collect data simultaneously from COM ports 1 to 4 available on standard PCs.

Collect for Windows is designed for users who simply want to turn on their computer and begin collecting data, and is ideal in laboratory and production environments where easy to use intuitive systems are required. Instrument data is captured, modified for your application and then sent to the keyboard buffer without affecting normal keyboard operation. Your foreground program accepts data as if it were manually entered from the keyboard. Other destinations for data include Collect for Window's



integrated QUICKSHEET spreadsheet, user specified disk files and the computer's monitor.

Collect uses a very simple technique for parsing or selecting only the required information from instrument data and ignoring the rest. Complex multi-component strings generated by your instrument are easily processed by Collect. User prompts can be incorporated into your application. Information such as operator name, product description, time, date and batch number can be added to your

data. As new data is received from the instrument, the cursor can be automatically located anywhere in your application program. Collect for Windows keystroke macros can activate menus and run macros in your foreground program.

System Requirements
 IBM or 100% compatible PC, Windows 3.1 or Windows 95, Windows NT, 4MB RAM, and 3MB disk space.
 Serial port with 16550 UART.

To Order (Specify Model Number)		
Model No.	Price	Description
SWD-COLLECT/W-3.5	\$295	Collect for Windows 3.1 Software
SWD-COLLECT	395	Collect for Windows 95/98/NT/2000 Software

Each unit supplied with complete operator's manual. Software provided on 3.5" disk

omega.co.uk[®]

Your One-Stop Source for Process Measurement and Control!

Freephone 0800 488 488 | International +44(0) 161 777 6622 | Fax +44(0) 161 777 6622 | Sales@omega.co.uk

www.omega.co.uk



UNITED STATES

www.omega.com

1-800-TC-OMEGA
Stamford, CT.

CANADA

www.omega.ca

Laval(Quebec)
1-800-TC-OMEGA

GERMANY

www.omega.de

Deckenfronn, Germany
0800-8266342

UNITED KINGDOM

www.omega.co.uk

Manchester, England
0800-488-488
+44-(0)161-777-6611

FRANCE

www.omega.fr

0800-466-342

BENELUX

www.omega.nl

0800-099-33-44



More than 100,000 Products Available!

• Temperature

Calibrators, Connectors, General Test and Measurement Instruments, Handheld Instruments for Temperature Measurement, Ice Point References, Indicating Labels, Crayons, Cements and Lacquers, Infrared Temperature Measurement Instruments, Recorders, Relative Humidity Measurement Instruments, PT100 Probes, PT100 Elements, Temperature & Process Meters, Timers and Counters, Temperature and Process Controllers and Power Switching Devices, Thermistor Elements, Probes and Assemblies, Thermocouples, Thermowells and Head and Well Assemblies, Transmitters, Thermocouple Wire, RTD Probes

• Flow and Level

Air Velocity Indicators, Doppler Flowmeters, Level Measurement, Magnetic Flowmeters, Mass Flowmeters, Pitot Tubes, Pumps, Rotameters, Turbine and Paddle Wheel Flowmeters, Ultrasonic Flowmeters, Valves, Variable Area Flowmeters, Vortex Shedding Flowmeters

• pH and Conductivity

Conductivity Instrumentation, Dissolved Oxygen Instrumentation, Environmental Instrumentation, pH Electrodes and Instruments, Water and Soil Analysis Instrumentation

• Data Acquisition

Communication Products and Converters, Data Acquisition and Analysis Software, Data Loggers Plug-in Cards, Signal Conditioners, USB, RS232, RS485, Ethernet and Parallel Port Data Acquisition Systems, Wireless Transmitters and Receivers

• Pressure, Strain and Force

Displacement Transducers, Dynamic Measurement Force Sensors, Instrumentation for Pressure and Strain Measurements, Load Cells, Pressure Gauges, Pressure Reference Section, Pressure Switches, Pressure Transducers, Proximity Transducers, Regulators, Pressure Transmitters, Strain Gauges, Torque Transducers, Valves

• Heaters

Band Heaters, Cartridge Heaters, Circulation Heaters, Comfort Heaters, Controllers, Meters and Switching Devices, Flexible Heaters, General Test and Measurement Instruments, Heater Hook-up Wire, Heating Cable Systems, Immersion Heaters, Process Air and Duct, Heaters, Radiant Heaters, Strip Heaters, Tubular Heaters